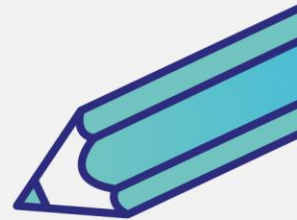
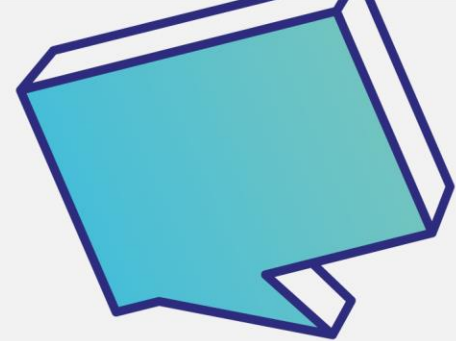




**GO HIGHER**  
West Yorkshire



# KEY INFLUENCERS

**University Centre**  
Bradford College



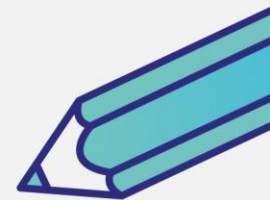
*University of*  
**HUDDERSFIELD**



**universitycentre**  
at **wakefieldcollege**



**GO HIGHER**  
West Yorkshire



# TRAIN THE TRAINER



# Background

- July 2017 Survey of Teaching staff – 195 responses from 22 schools/colleges
  - CPD to help support students to progress into Higher Education
  - UCAS
  - Raising Aspirations
  - Study skills

# Background

- Work/life skills
- Student life/experience
- Special Educational Needs and Disabilities in the HE context
- Applications to FE
- Apprenticeships
- Location and timing of training

# Responses

- Training on how to use resources – 82%
- General HE awareness and information training including an overview of the UCAS process – 80%
- Overcoming barriers and addressing prejudices about HE with families, communities and key influencers 84.6%
- Personal Statement writing – 72%
- How to stand out from the crowd – 65%
- Mentoring – 55%
- Alternative routes to HE – 68%

# Responses

- Employer/industry engagement -71%
- Employability skills – 70%
- Stress Management – 69%
- Student Finance and budgeting -70%
- Support available for SEND students – 75%
- A levels vs BTEC - 60%
- Interview skills 68.5%
- Apprenticeships – 67%

# Location and time for training

	Ideal	A possibility	This will not work for us
In your school/college/academy	166 (85.1%)	27 (13.8%)	2
Off-site in a partner/nearby school	13 (6.7%)	158 (81%)	24 (12.3%)
Off-site in a regional central location such as Wakefield/Leeds/Bradford city centre	6 (3.1%)	139 (71.3%)	50 (25.6%)
At one of 12 Higher Education providers across West Yorkshire	7 (3.6%)	148 (75.9%)	40 (20.5%)
Our CPD being delivered alongside or "bolting on" to existing CPD events run by other organisations	32 (16.4%)	126 (64.6%)	37 (19%)
Online, e.g. webinars	45 (23.1%)	118 (60.5%)	42 (16.4%)
Through handouts and downloadable information packs to read at your own convenience	73 (37.4%)	102(52.3%)	20 (10.3)

# Train the Trainer

- Resources developed by a team of staff
- Commissioned C&K Careers
  - Three day accredited course
  - Quality assured recourses with lesson plans
  - Linked to Gatsby Benchmarks
  - Available to schools and community organisations
  - 40 places offered



# Outcomes

- 4 x 3 day courses offered 10 places per course. 32 attended
- Accreditation – two Units Diploma in Careers Guidance L4 or L6
- Those attending included staff with careers and enterprise responsibilities, subject teachers, community group workers, Youth Offending Team.
- All found the training useful or very useful
- 'lots of excellent ideas and resources
- Participants have trained colleagues or plan to in the near future
- We are now offering a short introduction to the resources in individual schools/colleges

# Outcomes

- Resources are now available for download at [www.gohigherwestyorks.ac.uk](http://www.gohigherwestyorks.ac.uk)
- Bill Robb email [W.robbs@leeds.ac.uk](mailto:W.robbs@leeds.ac.uk)



## Our Partners

**University Centre**  
**Bradford College**



UNIVERSITY of  
**BRADFORD**



**CALDERDALE COLLEGE**

INSPIRING LEARNERS TO SUCCEED IN LIFE & IN WORK

*University of*  
**HUDDERSFIELD**



**KIRKLEES**  
**COLLEGE**



**UNIVERSITY OF LEEDS**



**LEEDS**  
**ARTS**  
**UNIVERSITY**  
1846



**LEEDS**  
**BECKETT**  
**UNIVERSITY**



**Leeds**  
**College of**  
**Building**



**UNIVERSITY**  
**CENTRE**  
at Leeds City College



**Leeds Trinity**  
**University**

**universitycentre**  
at **wakefield**college