



UNIVERSITY OF
LEICESTER

Welcome to the University of Leicester

NEON Summer Symposium 2016

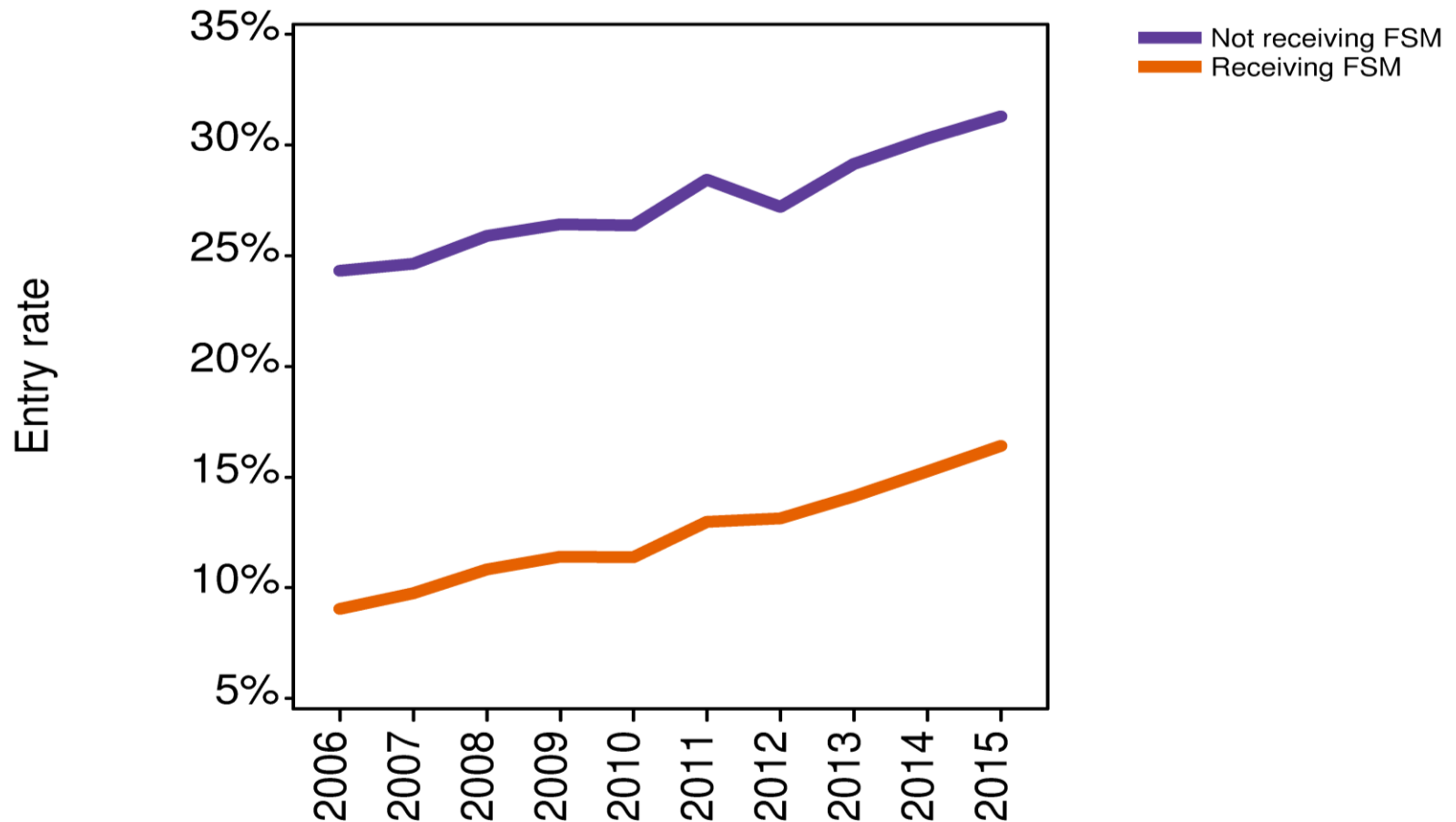
Professor Emma Smith
Academic Lead Widening Participation



The current context of Higher Education

- Higher Education in the UK has moved from an elite to a mass experience.
- In 2015/16 532,300 students entered Higher Education, an increase of 4% over 2014/15
- 18 year olds in England and Wales are now more likely to enter University than ever before
- 42% of 18 and 19 year olds now enter HE
- More people from disadvantaged backgrounds now enter Higher Education than ever before.
- 'Fair access to HE is a social mobility success story'.

Entry rates for English 18 year old state school pupils by free school meal status at age 15

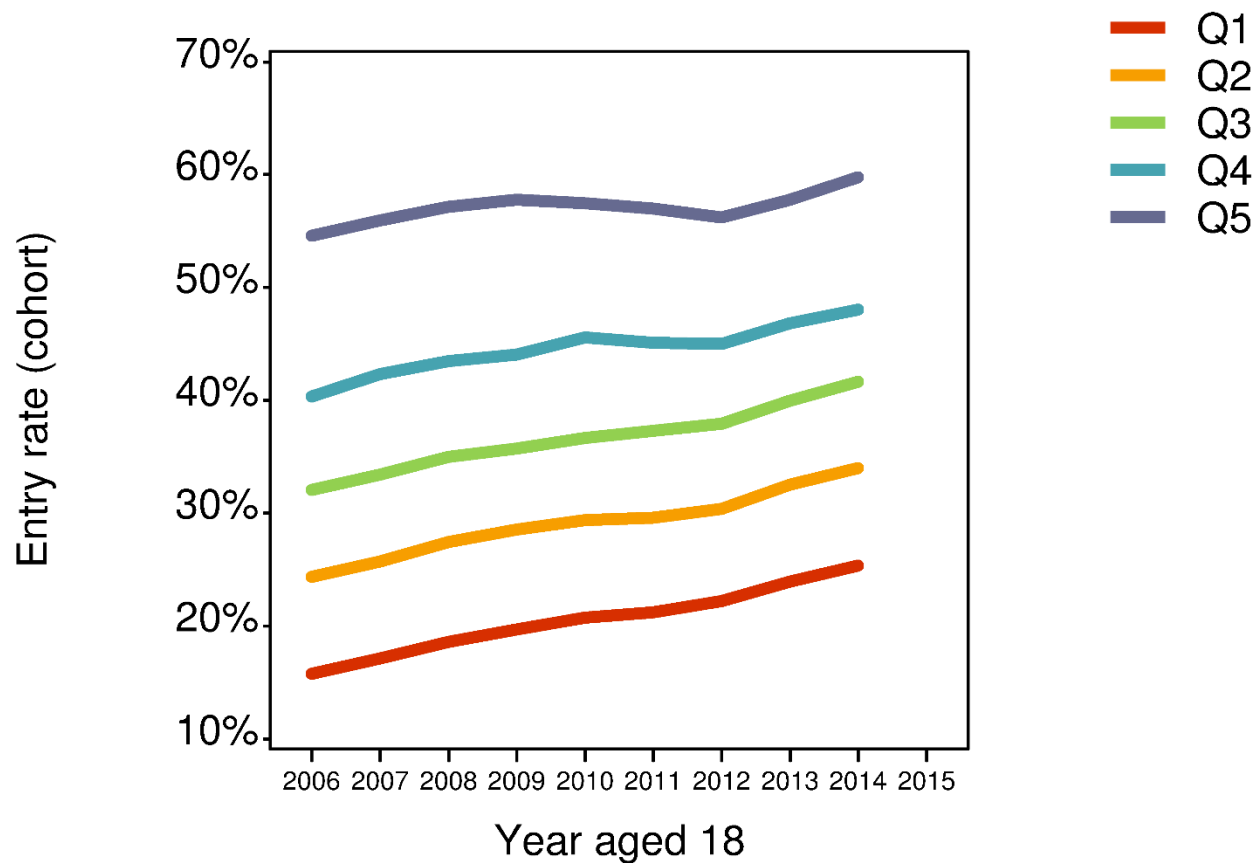


Higher Education and Social Mobility

“Higher education continues to be a sound financial and personal investment with a wide range of societal benefits. But there is more to be done for our university system to fulfill its potential as an engine of social mobility, a driver of economic growth and cornerstone of our cultural landscape” (Higher Education White Paper May 2016, p7).

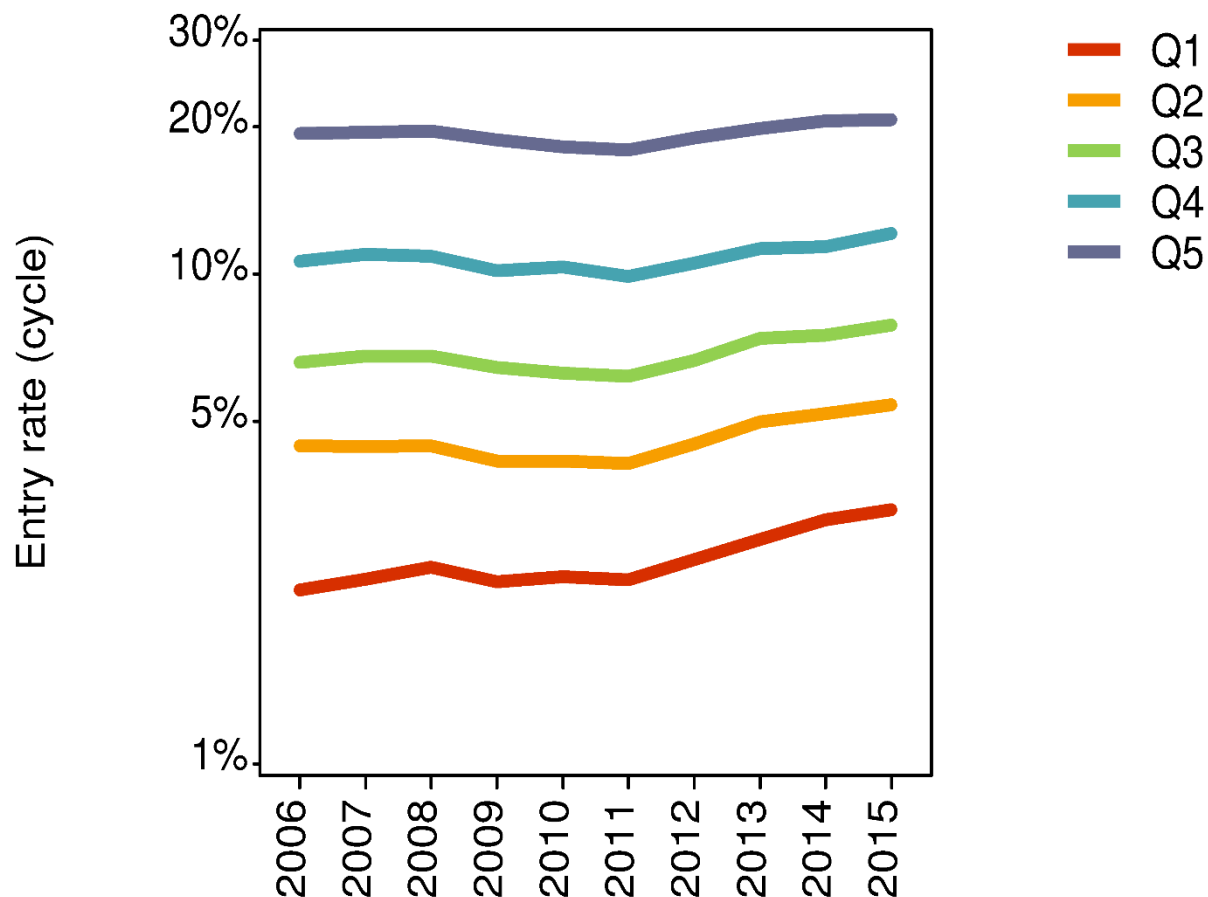
- Double the % of students from disadvantaged backgrounds entering HE by 2020
- Increase the proportion of BME students by 20%
- A renewed focus on white working class boys
- Better access to data to monitor patterns of participation and success

Young cohort entry rates (aged 18 or 19) by background for England



Source: Figure 69 from 'UCAS End of Cycle Report 2015', www.ucas.com

English 18year olds entry rates to higher tariff providers by POLAR3 groups



Source: Figure 73 from 'UCAS End of Cycle Report 2015', www.ucas.com

Future challenges

- A shift in focus to student retention and subsequent destinations
- The 'demise' of the AS level and implications for the accuracy of predicted grades
- Changing assessment at GCSE and A-level
- Increase in the proportion of students taking 'alternative' qualifications
- The Teaching Excellence Framework

Next steps...

- Developing long term, sustained outreach
- A student lifecycle approach
- A more tailored evidence-based spend
- More collaborative work

Professor Les Ebdon, 7th June 2016

Widening participation at Leicester



UNIVERSITY OF
LEICESTER

Students in Classrooms



Selected + trained undergraduates – c130-150 per year

30+ hours classroom placement - 70% in key WP target schools

4000+ collective hours annually – big opportunity to raise aspirations

All non-academic input centrally managed by WP team

Two routes:

Optional 2nd/final year modules

- Communicating subject to non-specialist audience
- WP schools prioritised
- gain academic credit
- Maths, Physics, Geology, English, History, Modern Languages, Sociology, Archaeology

Understanding educational disadvantage + raising aspirations central message

Pro-active WP school recruitment to increase reach

Positive role models – education and beyond

Wide ranging benefits – pupils, schools, students, University, Community

Tomorrow's Teachers scheme

- Support subject learning in WP schools
- Focus on reflective practice
- HEAR approved
- All subjects

Leicester Enhanced Access Programme (LEAP)



- University's own progression programme
- Two year engagement with academically able post 16 WP students
- Supported through the programme by an eMentor (a current student)
- Activities include:
eMentoring programme, study skills activities, library induction, an academic assignment (EPQ or in house assignment), residential summer school, subject taster conference and careers development day
- Students who successfully complete LEAP and apply to Leicester will receive an alternative offer (if an offer is made) and a financial package on registration to study.



UNIVERSITY OF
LEICESTER

Care Leavers & Children in Care

Longstanding collaborative outreach offer with Loughborough & DMU

Development of strong links as a group with Virtual Schools

University Experience Summer School (16-25)

‘Rough Guide to HE’ training event

Engaging care experienced students - their journeys inspire others



Law graduate and Care Leaver Brandon receiving NEON Commendation 2015 at the Palace of Westminster for his work with young people who have been in care



Politics & International Relations graduate and former Care Leaver Carrie - from Summer School Mentor to project Officer at the Care Leavers' Association

Transitions into university & ongoing mature student support

Mature learners induction programme

Peer mentoring

Coffee mornings

Mature student ambassadors

Working with the Students' Union:

Mature Student & Postgraduate Association (MSPGA)



NEON Mature Student Conference

Friday 25th November 2016

Stamford Court, University of Leicester

Reviewing some of the key concerns for mature students in HE and the latest research on this subject.

Further information coming soon.

For queries and expressions of interest please contact

wpteam@le.ac.uk

Widening Participation Impact Pot

- Launched in 2013 to facilitate greater flexibility and experimentation in how the University works to reduce educational and socio-economic disadvantage.
- Provides all university staff members and students with the opportunity to develop and deliver projects designed to secure fair access and student success for those from underrepresented groups.
- Over £65,000 has been distributed to twelve projects and three MSc studentships through the WP Impact Pot.
- In 2016/17 it will fund two large projects focused on supporting the retention of mature students and increasing the employability of widening participation students.



UNIVERSITY OF
LEICESTER

Pilot Year Progress



- 13 students on the project
- 7 students currently WP
- 10 students actively delivering
- 10 students have completed a Multi-Skills Coaching Course
- 5 have completed a Level 1 Coaching Course
- Engaged with 4 primary schools within the city, (approximately 110 children)
- Working alongside a Masters student in the evidencing of the effects

The
Leicester
Academy



"Children from areas of high deprivation; with complex social, emotional and educational needs are always inspired and engaged when visitors come. Visitors with a purpose, such as the students who volunteer in our school are like gold dust. They are valued, valuable and add sparkle to the lives of our children. As a school we inspire children to succeed and be the best that they can be. Support from outside agencies help us to achieve those goals and strengthen our links with the wider community."

Grainne Purkiss, (Teacher at Braunstone Community Primary School)

Pathways to Law



- The Pathways to Law programme was set up in 2006 by The Sutton Trust and The Legal Education Foundation, with support from major law firms, to inspire and support academically-able students in Year 12 and 13 from non-privileged backgrounds interested in a career in law.
- In 2016 the programme was expanded to cover Year 10 and 11 students as well.
- In 2016, the University of Leicester joined to Pathways to Law programme.
- UoL is one of very few non-Russell Group institutions on the programme.

Medreach



- Medreach is an innovative, science-based, widening participation outreach scheme.
- Although led by Medical students, Medreach is not primarily about access to Medicine but aspirations and attainment raising
- Medreach students offer an e-mentoring programme and also deliver outreach sessions in local schools.
- The e-mentoring scheme is underpinned by events such as the 'Meet the Mentors' day: Year 12s undertake activities on Medical Ethics and Year 13s are involved in 'Medicine Interview Skills' workshops.

