

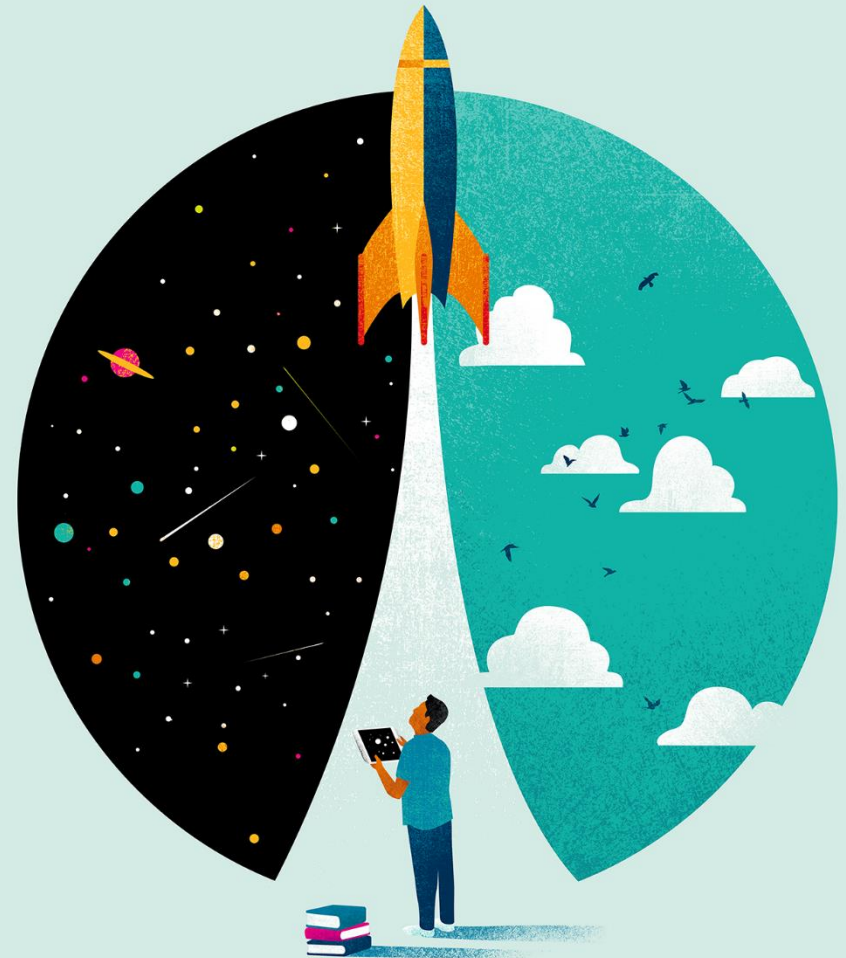


Pearson

# The Rise of T Levels and what this means for BTEC

Ria Bhatta  
Head of Stakeholder Engagement

02 December 2020



# Phase one T Levels

- **Education and Childcare**
- **Digital** (digital production, design and development)
- **Construction** (design, surveying and planning)

First teaching **Sept 2020**.

Due to complete **summer 2022**.

Original DfE enrolment target across the 3 sectors in the first year: 2000



# Introducing T Levels

## Components of a T level:

### Technical qualification

- Core theory, concepts and skills for an industry area
- Specialist skills and knowledge for an occupation or career.

### Work placement (min. 315 hours)

### Level 2 English and maths (if not already achieved)

All components must be achieved, to be awarded the T level.

On average, requires **1800 hours** to complete over 2 years.

Carries UCAS points.



# T Level example: Science

## Summary of T Level content

- Understanding of health and science (e.g. working in the sector, health and safety, managing information, core science concepts such as structure of cells etc)
- Science-specific topics (e.g. understanding the sector, scientific methodology, ethics)
- Optional specialisms in laboratory sciences, food sciences, metrology sciences.

## Intended progression routes (as outlined by DfE)

- Career options may include: technical support scientist, metrology technician, food technician.
- Or can progress to higher level apprenticeship, or course of study.

# BTEC L3 National Extended Diploma: Applied Science

## General pathway

- Principles and applications of science (biology, chemistry and physics)
- Practical skills (e.g. scientific procedures, lab techniques)
- Investigative project
- Optional units (e.g. human biology, forensics, genetic engineering, materials science, astronomy, cryogenics)

**Specialist pathways:** biomedical science, analytical and forensic science, physical science).

## Typical progression routes

Can lead to progression as a lab technician.

Top 5 degree areas (according to HESA data in 2017):

- Allied health degrees
- Biology
- Forensic and archaeological science
- Nursing
- Psychology

# Numbers of BTEC students progressing to university

The number of students **progressing to university with a BTEC** increased from **13.3% in 2008** to **24.3% in 2015**



Today, around **1 in 4** students enter university having taken a BTEC National



Of those, around **two-thirds** have taken a BTEC on its own...



...while **one-third** have taken a BTEC alongside A levels



Each year, around **100,000 students** enter university with a BTEC National



# BTEC Level 3 Nationals (RQF)

## Key features:

- A min. of 30% external assessment (e.g. exams/tasks set and marked by the exam board)
- A min. of 40% mandatory/core content.
- Inclusion of synoptic assessment.
- Inclusion of a research/project type unit in most sectors
- Limited number of resit/resubmission opportunities.



# Key dates

Majority of BTEC students completing in **summer 2022** (for entry to HE in 2022/3) will be on reformed BTEC RQF qualifications

## From DfE consultation:

- **2024** - all schools & colleges currently funded to offer study programmes can offer all T levels.
- **2023** and **2024** - proposed withdrawal of public funding for some vocational qualifications.





# Pearson's views on the DfE's Level 3 and below review

- Welcome the government's efforts to raise the status of vocational and technical education in the UK.
- Welcome the recognition for the need for some other qualifications at Level 3, in addition to A Levels and T Levels.

Some concerns with the existing proposals include:

- The potential narrowing of the curriculum and options for post-16.
- The continued binary choice between an academic and technical route, albeit with some flexibility under the former, risking diversity of the curriculum.
- Whilst we see the value of T Levels within the curriculum, we question whether this will meet the needs of all those wishing to experience vocational education.
- Potential risk to widening participation (some students “may find themselves no longer able to progress onto HE and accrue the significant average benefits to wage and employment returns”, extract from the DfE Impact Assessment).
- Potential risk of unintended consequences to the wider system.

# DfE's consultation

Level 3: [link to consultation](#)

Deadline: **15 Jan 2021**

Level 2 and below: [link to consultation](#)

Deadline: **31 Jan 2021**

To discuss today's presentation, or other matters relating to BTEC and other Pearson qualifications, please contact me:

ria.bhatta@pearson.com

ALWAYS LEARNING