

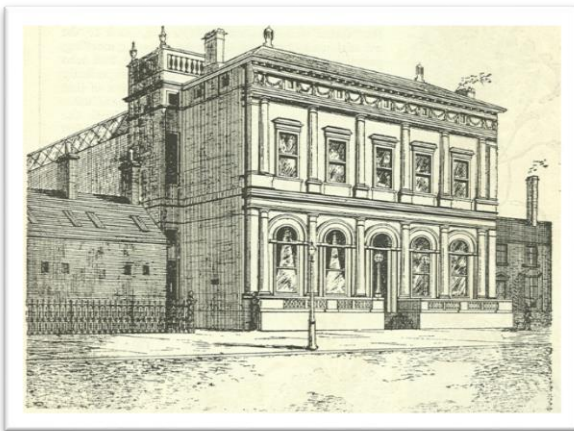
# **In reach and Outreach – Widening Access in an FE Setting**

Helen Newton

Head of Learning – Higher Skills

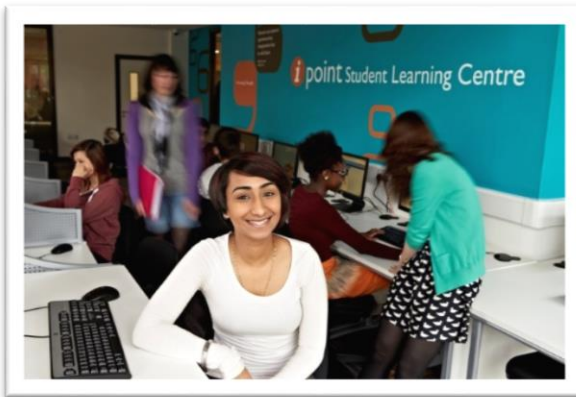
# Dudley College

- 12,500 students, including young people, adults and HE
- 4,000 full-time 16-18 students
- 3000+ courses.
- Wide range of vocational and academic programmes.
- Rated OFSTED Outstanding in 2017



# FE Sector

- Staff have a variety of roles
- Finance is tight
- Teaching is fast paced at level 3
- Teach at many levels
- The sector is constantly changing
- Competition and Collaboration



# FE Students

- Focused on vocational choices
- Discriminating in activity choice
- Move as a pack
- Often have jobs/responsibilities
- High number of NCOP



# In Reach and Outreach



- Dudley Multi-Academy Trust
- Local schools – local challenges
  - Raising attainment as well as aspiration
- Local HE provision
  - Black Country Colleges
- Community engagement and development





# What we do – In reach

- Progression talks
- Progression week events
- Clearing
- UCAS events
- Tutorial enhancement

UCAS



# What we do - In reach

- One-to-one IAG interviews
- Whole group University trips
- Pop-up Open Days with HEIs



UNIVERSITY  
*of* DERBY



# What we do - In reach

- Embedding aspirational culture
- Elevate education
- Speakers trust
- LEP Priority HE Provision





# Why HE in FE?

- Confidence
- Security
- Cost
- Employability
- Flexibility
- Support



# Does it really meet the WP agenda?

- High status Universities provide the highest income returns for graduates (Institute of Fiscal Studies, 2018)
- Creating high quality progression routes
- Identifying key partnerships with HEIs
- Expanding the aspirational culture throughout FE



# What do we do - Outreach

- Maths and English masterclasses
- Taster days
- HE in FE talks to sixth forms
- Careers breakfast meeting
- Supporting teaching staff



# What do we do - Outreach

- Science mentoring
- STEM days





# Linking thinking

