



GO HIGHER
West Yorkshire

Collaboration for Care Leavers: A Multi-Faceted Commitment

University Centre
Bradford College

 **UNIVERSITY of**
BRADFORD

CALDERDALE COLLEGE
INSPIRING LEARNERS TO SUCCEED IN LIFE & IN WORK

University of
HUDDERSFIELD

 **KIRKLEES**
COLLEGE

 **UNIVERSITY OF LEEDS**

LEEDS
ARTS
UNIVERSITY
1846

 **LEEDS**
BECKETT
UNIVERSITY

Leeds
College of
Building

 **UNIVERSITY**
CENTRE
at Leeds City College

 **Leeds Trinity**
University

universitycentre
at wakefieldcollege



Our Partners

University Centre
Bradford College



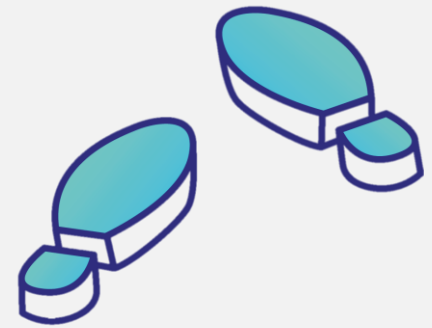
University of
HUDDERSFIELD



universitycentre
at **wakefield**college

Go Higher West Yorkshire

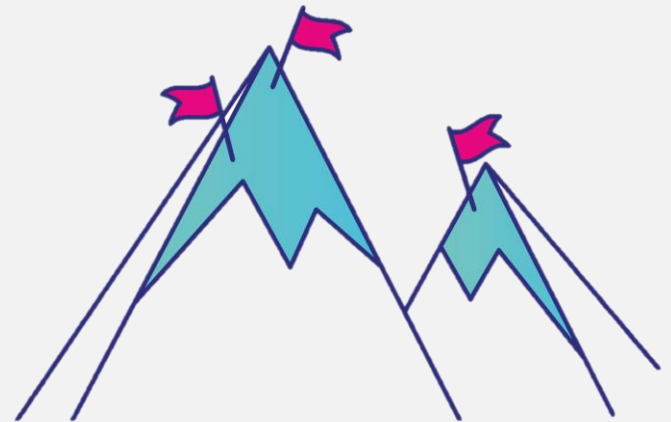
An Introduction



- Based upon ethos of collaborating and sharing the load
- Widening access and success
- Business engagement and developing higher level skills
- Core priority groups
 - ✓ Looked after children and care leavers
 - ✓ Mature learners
 - ✓ Children from low participation neighbourhoods
- Funded projects
 - ✓ National Collaborative Outreach Programme
 - ✓ Degree Apprenticeship Development Fund 2

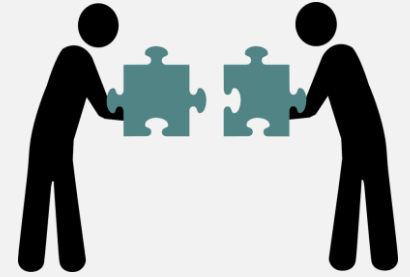
Our work with looked after children and care leavers

- Care Leaver Covenant
- Outreach – Foster Family Fun Days and more
- Success initiatives – Professional Mentoring
- Public relations campaigns
- Wider collaboration
 - ✓ Local Authorities
 - ✓ Schools
 - ✓ Communities
- Engagement with carers



Collaborative Covenant

The Making of



- Response to 2016 Government strategy for Care Leavers
- HE partner consultation on current provision
- Development of our declaration
- Development of our 'at a glance' table of support
- First collaborative Covenant of its kind
- Launched during National Care Leavers Week 2017
- Approved and shared by Learning and Work Institute
- Available online, with a hard copy resource being developed for 2018.

Our Declaration



“We, Go Higher West Yorkshire, recognise the challenges that young people face when they leave the care system and begin to live independently. We recognise that all parts of society have a responsibility to support care leavers so that they can make a successful transition to adulthood. We hereby make a commitment to undertake the following actions that will help improve care leavers’ life chances. “

Our 'at a glance' table of support

Support Offered (Click for more information)	Bradford College	University of Bradford	Calderdale College	University of Huddersfield	Kirklees College	University of Leeds	Leeds Arts University	Leeds Beckett University	Leeds College of Building	Leeds City College	Leeds Trinity University	Wakefield College
Foster Family Fun Days	✓	✓	✓	✓	✓	✓	✓	✓	✓	✓	✓	✓
Pastoral Support	✓	✓	✓	✓	✓	✓	✓	✓	✓	✓	✓	✓
Named Contact for information	✓	✓	✓	✓	✓	✓	✓	✓	✓	✓	✓	✓
Web Support/information	✓	✓		✓		✓	✓				✓	
Summer schools and weekend activities						✓	✓	✓			✓	
Application Support	✓		✓	✓		✓	✓	✓	✓			✓
Contextual Admissions *	✓	✓		✓		✓					✓	✓
Accommodation	✓	✓		✓		✓	✓	✓		✓		
Financial Support	✓			✓		✓	✓	✓	✓	✓	✓	✓
Transition Support				✓		✓						
Employment Support	✓			✓		✓	✓	✓	✓		✓	
Staff Awareness Training	✓			✓		✓		✓				

* To find out more visit <https://www.ucas.com/advisers/guides-and-resources/adviser-news/news/contextualised-admissions-and-what-it-means-your-students> and <https://www.ucas.com/advisers/guides-and-resources/supporting-care-leavers-toolkit>

Objectives

Improved access to information for
care experienced young people and
their key influencers



Objectives

Progressive, consistently aligned
access and success strategies



Objectives

Public relations showcase of
regional excellence



Use of the Covenant in outreach

Online resource for:

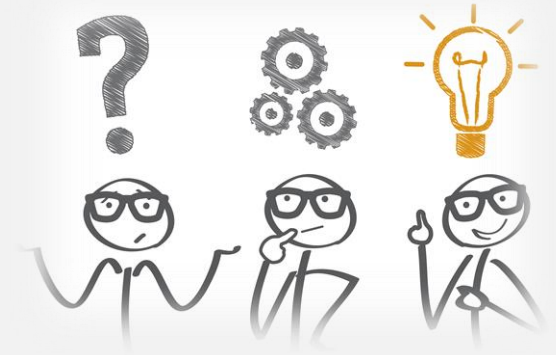
- Prospective students currently in care
- Current and prospective students who have already left care
- Carers
- Professionals, e.g. Personal Advisors
- Other community influencers



Additional benefits to our HE partners

- Shared risk in development of untested resource and approach
- Shared cost of development via subscriptions to partnership
- Wider reach to stakeholders not typically accessible
- Institution-neutral approach to widening access rather than recruitment
- Inclusive approach regardless of institution size and capacity

Challenges



- Information can become out of date
- Managing competition between HE partners
- Reaching the right stakeholders
- Evidencing:
 - ✓ The use of the Covenant
 - ✓ It's usefulness for young people
 - ✓ A positive impact on HE partners

5 min quick-fire discussions

How can **we** collaborate for care leavers?

Considering the three core objectives outlined by Go Higher West Yorkshire (below), please discuss any untapped **potential to collaborate in your own region/institution** that could **benefit care leavers** entering, in or leaving HE.

- ✓ Improved access to information for care experienced young people and their key influencers
- ✓ Progressive, consistently aligned access and success strategies
- ✓ Public relations showcase of regional excellence

Feed back and share any light-bulb moments...



Plans for the future

- Annual refresh 2018/19 – reviewing format, content and usefulness
- Consultations with local young people in or leaving care
- Adaptions for other groups:
 - ✓ Estranged students
 - ✓ Care experienced apprentices
- Development of physical resource
- Bigger and better PR to reach intended audiences
- Evaluation strategy for evidencing positive impact of Covenant

Thank you for listening and joining in.

Any questions?

Visit www.gohigherwestyorks.ac.uk/care-leavers to view our online Covenant and find out more about our work.

Alternatively, contact Natalie Aldridge on n.Aldridge@leeds.ac.uk

University Centre
Bradford College

 UNIVERSITY of
BRADFORD

CALDERDALE COLLEGE
INSPIRING LEARNERS TO SUCCEED IN LIFE & IN WORK

University of
HUDDERSFIELD

 KIRKLEES
COLLEGE

 UNIVERSITY OF LEEDS

LEEDS
ARTS
UNIVERSITY
1846

 LEEDS
BECKETT
UNIVERSITY

Leeds
College of
Building

 UNIVERSITY
CENTRE
at Leeds City College

 Leeds Trinity
University

universitycentre
at wakefieldcollege