



OUTREACH HUBS

Claire O'Neill, SUN
Holly Yorston, HEON

OUTREACH HUBS

A single point of contact for ALL schools/ colleges within a defined region to help meet Gatsby Benchmark 7 requirements.

Facilitating access to existing provision and working collaboratively to create new or expanded provision

Provide a platform for other collaborative activity covering high level skills gaps, landscape of educational disadvantage and joined up careers advice

Potentially drawing in additional funding to meet innovative and locally tailored approaches

HEON OVERVIEW

Targeted Outreach

Surrey and NE Hampshire—11 wards

3,895 target NCOP learners

2 local authorities

4 university partners

2 LEPS

1 CECs

4 partner HE/FE colleges

Outreach Hub

Surrey and NE Hampshire: 13 LAU1 areas

Hampshire LA/ M3 Enterprise / Coast to Capital LEP split across regions

116 Schools (inc. 38 alternative settings)

Approx. 12,000 students.

Cross over with SUN – shared border with London, Study Higher and SLN:COP

SUN OVERVIEW

Targeted Outreach

Dorset and Hampshire – 70 wards

28,000 target NCOP learners

5 local authorities

6 university partners

3 LEPS

3 CECs (currently 1-3 hubs)

104 partner schools

21 partner FE colleges

Outreach Hub

Dorset and Hampshire: 20 LAU1 areas

Hampshire LA/ M3 Enterprise LEP split across regions

233 Schools (inc. 67 alternative settings)

Approx. 60,125 students.

Cross over with WIN/ SLN/HEON

GEOGRAPHY

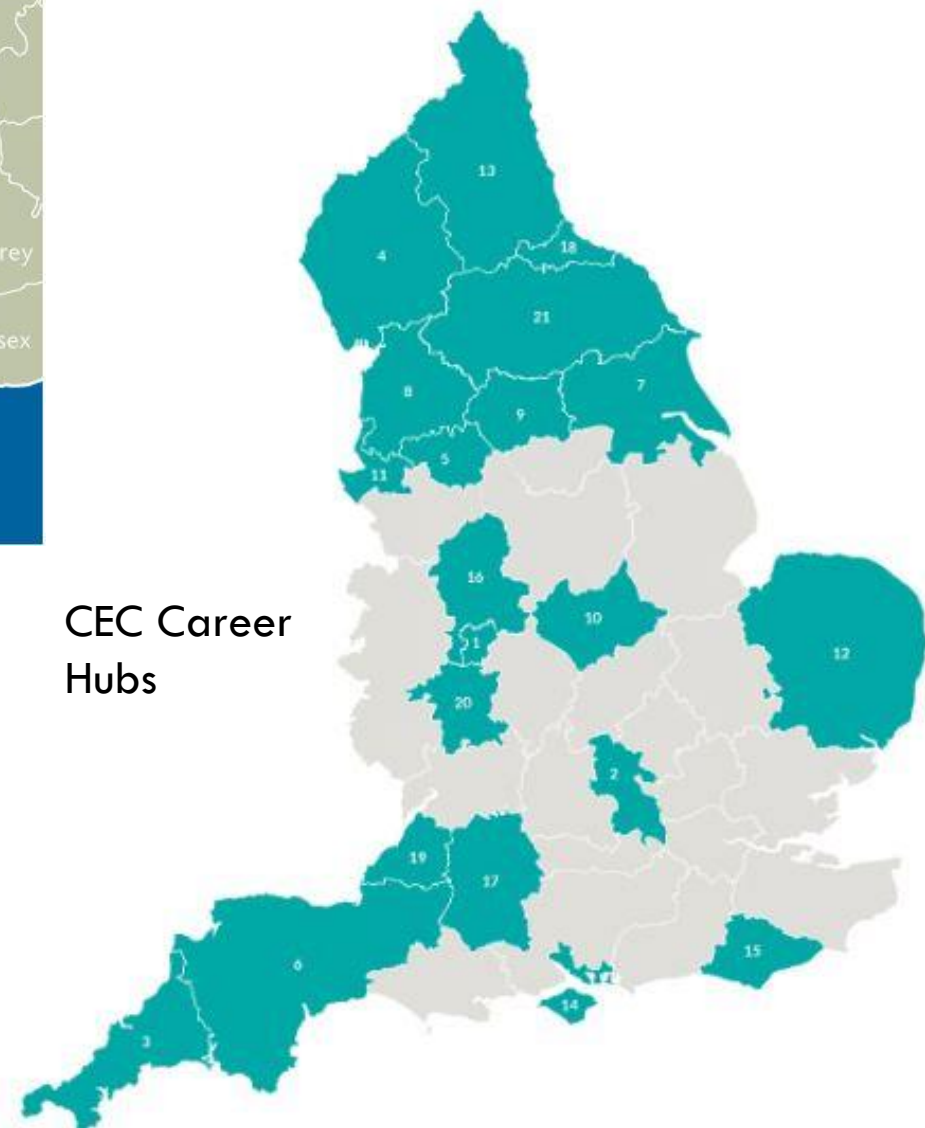
Wessex



LEP Areas

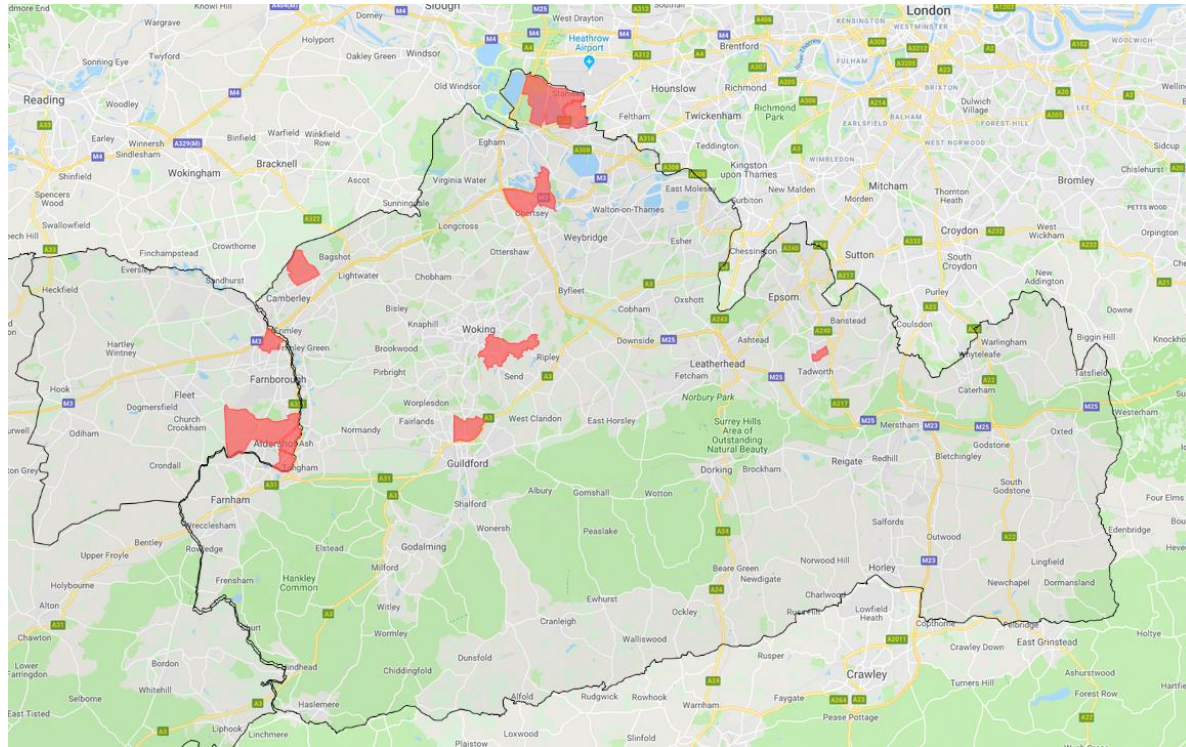


CEC Career Hubs



HEON REGION

NCOP wards

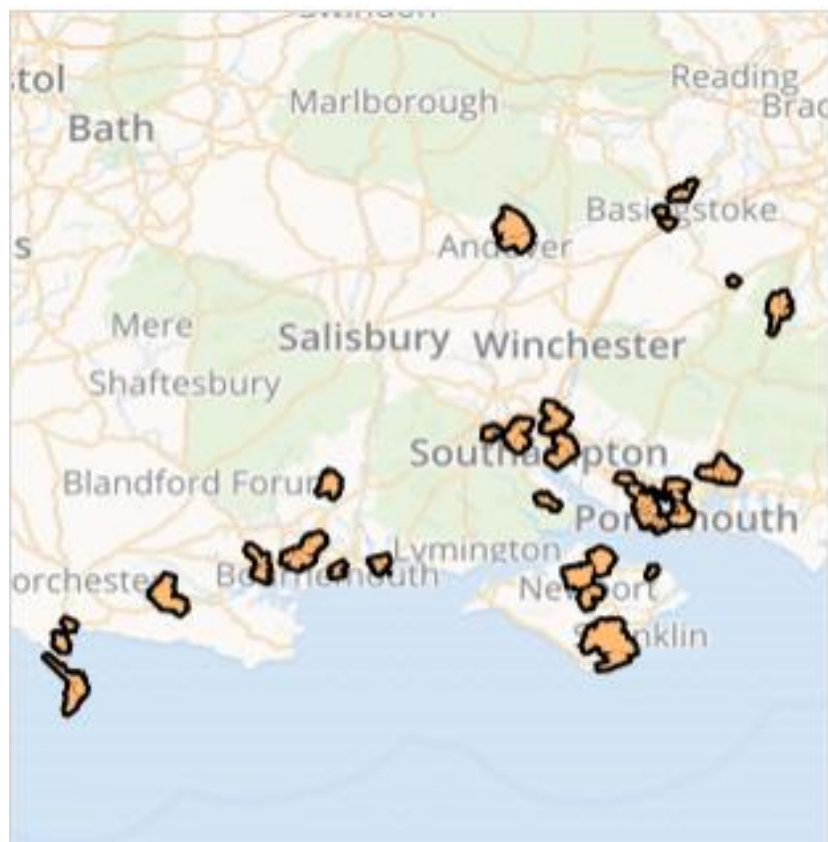


POLAR 4: Q1 & 2

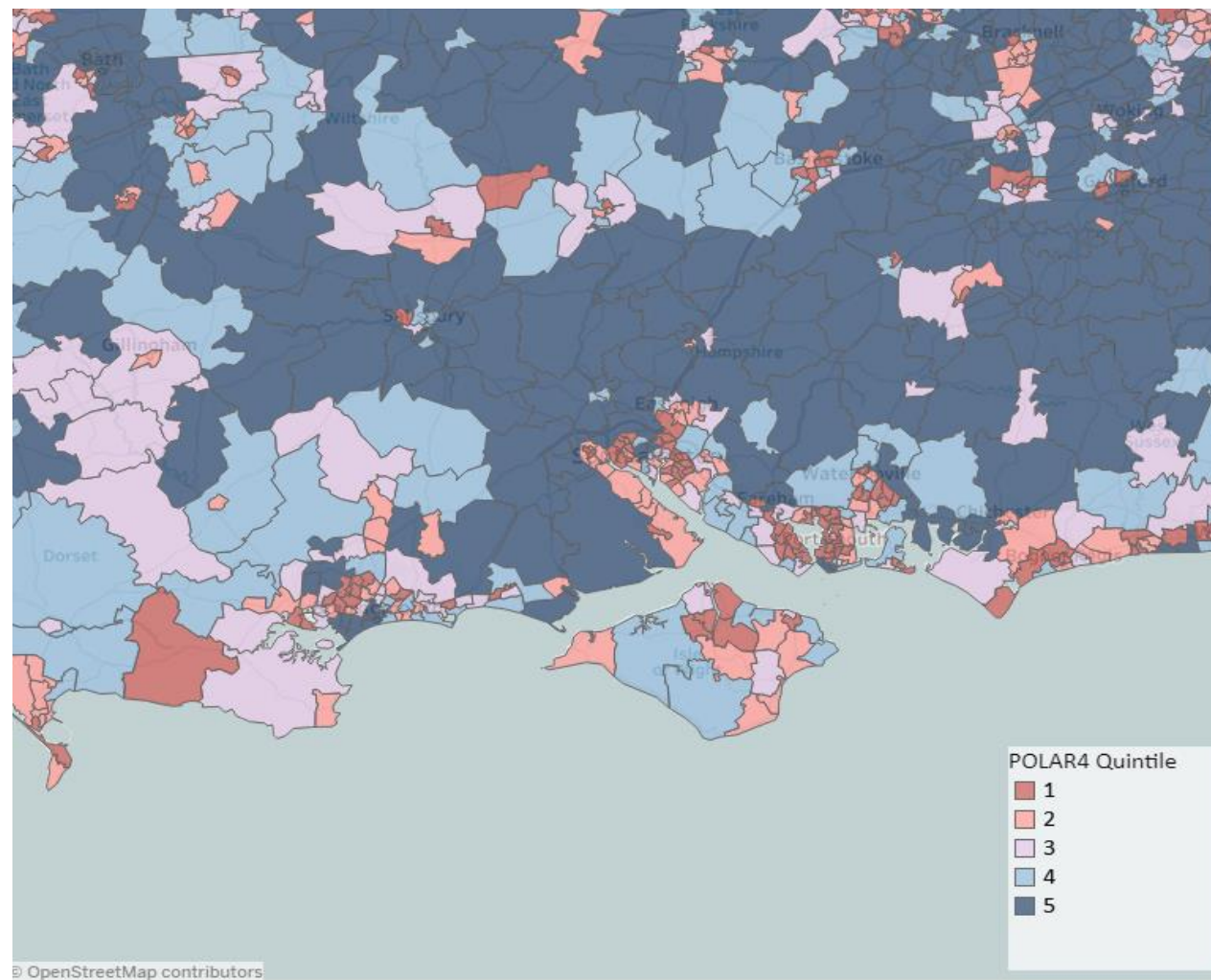


SUN REGION

NCOP wards



POLAR 4: Q1 & 2



Outreach Postcodes

Choose a postcode area to start revealing insights...

Start of Postcode

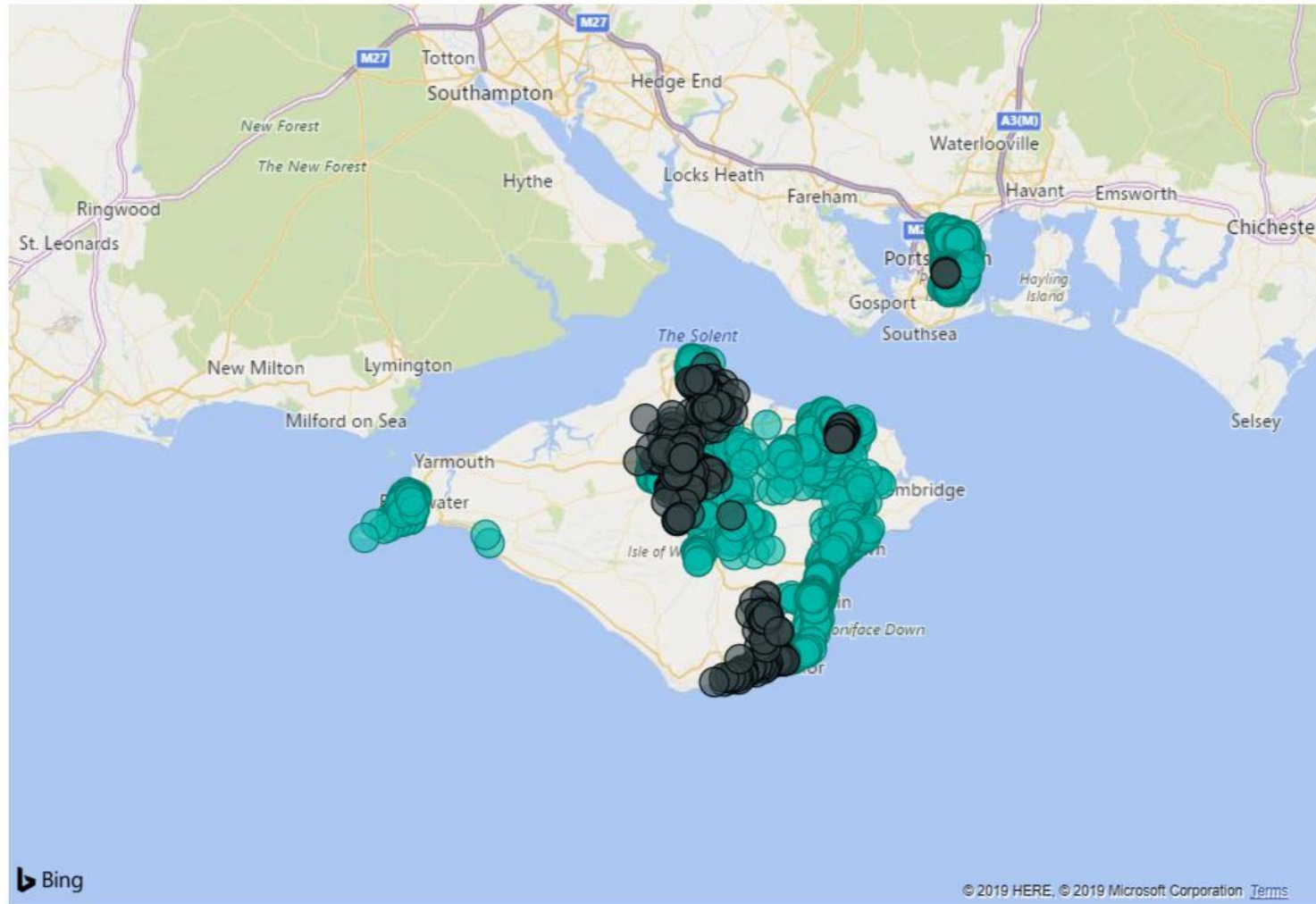
PO3

Do you want to see just current NCOP postcodes?

Is NCOP

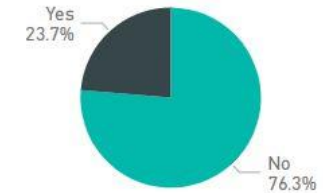
Map of Potential Postcodes

Is NCOP ● No ● Yes



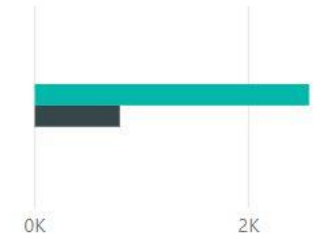
Percentage NCOP

● No ● Yes



Total NCOP

● No ● Yes



POLAR 3 Quintile

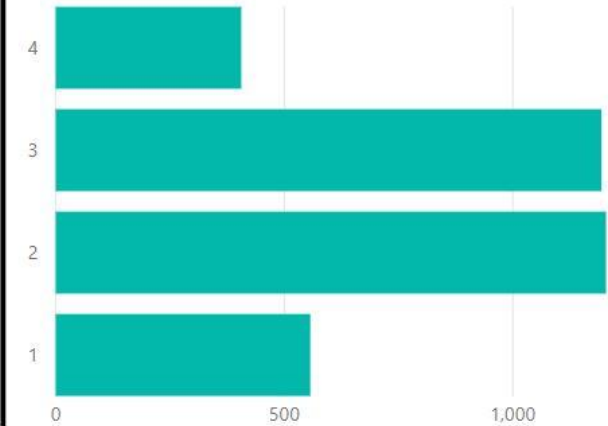


Total potential postcodes

3361

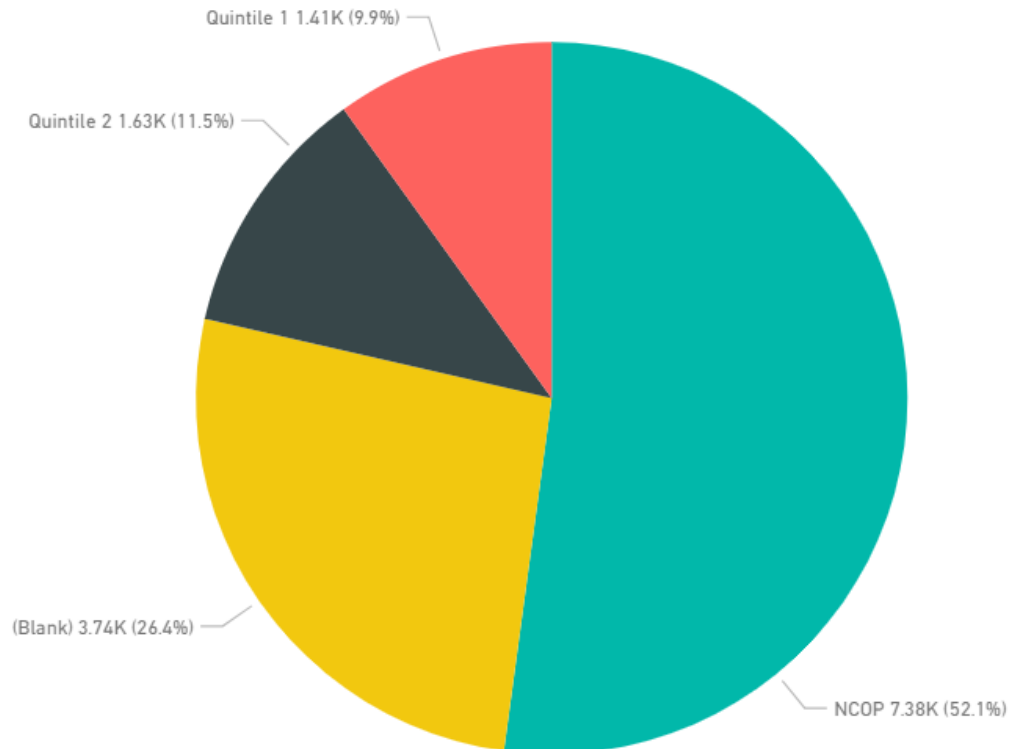
Polar 4 Quintile

Gap Att



SOUTHAMPTON NCOP VS HUB

Breakdown by NCOP or Q1 or Q2



Current NCOP postcode:
1786

Outreach hub would add:

Quintile 1 = 350

Quintile 2 = 491

CURRENT PROJECTS

Hampshire Career Partnership: Careers Education Excellence across all Hampshire

- Forum for sharing resources, coordinating events and providing collaborative CPD
- EMSI – Live LMI data for use within schools/ colleges across the region showing skills shortages, mapping future jobs etc.

- Isle of Wight- I-ASPIRE programme
 - Research into current level 4 provision and need across the Island
 - Starting a collaborative working group of four universities who currently deliver to ensure equity of coverage for all Isle of Wight schools

- Dorset: Academic Resilience Approach programme
 - Working through DCC Education Psychologist teams looking to expand to a pan-Dorset offer. Already offering county wide CPD and working with the SUN team to support all schools to receive support and guidance

CURRENT PROJECTS

- Young Researchers
 - Linking up current programmes running in Dorset and Portsmouth & Southampton. Looking at a region wide approach to instigate further research but also establish effective youth forums within the local authorities.
- Research and Evaluation Hub
 - Building upon a collaborative Evaluation working group across partner HEIs, we are in conversations with the Southern Policy Centre about collaborative research and evaluation across the region.
- SUN Operations Group
 - Facilitating the meeting of local authorities, outreach teams and other key stakeholders to
- Working with employers
 - Currently co-sponsoring Careers and Apprenticeship shows with LEPs and Las. Working with Inspiring the Future to build employer volunteers to work with schools and Linked-in/ CEC to build alumni networks

CURRENT PROJECTS

- HEON Parent evenings

Whole year group parent evenings, providing IAG for students and parents, holistic event for whole families with opportunities for parents and siblings through collaboration with other organisations.

- Year 9 Taster days

A full day introduction to higher education including university and apprenticeship pathways and a series of contrasting and highly interactive subject taster sessions

- Surrey County Council and Association of Learning Providers (ALPS)

Apprenticeship project working with groups of students that require support in exploring/applying for apprenticeships plus results day support (identified gap)

- SATRO mentoring

Local business employees have been mentoring Year 10 students for an entire academic year, their support has been instrumental in raising aspirations, addressing gaps in professional skills and preparing the learners for their work experience week

CURRENT PROJECTS

- Young Enterprise (Company Programme and Learn 2 Earn)

Company Programme sees groups of learners design, prototype and market a product with support from local business employees. The school groups then compete against other “companies” in regional and national competitions

Learn 2 Earn is a 1 day interactive programme that covers professional skills, budgeting, university and apprenticeship pathways and helps learners set themselves SMART targets as part of a careers action plan.

- PiE – Performance in Education

Whole year group theatre tours focussing on options for progression and combatting myths around HE.

- Keynote Speakers

Whole year group revision for core subjects bespoke to the needs of the school and students.

- Community Projects such as Youth Groups

Continue to work with established groups and assist in filling gaps in activities, ability to work with wider groups as less targeted in attendance. Potential to start new community groups in collaboration with schools and colleges.

OUTREACH HUBS: THE IMPOSSIBLE DREAM?

- **Impartial** advice
- Building upon the NCOP approach of combining different providers within activity
- Access to existing universities outreach programmes working to complement coverage within a region to ensure equity.
- A website that gives meaningful information and support to ALL schools/ colleges
- Universities supporting additional activity as part of their APP plans
- Legacy building. Upskilling and developing resources/ programme that can continue a minimum costs for schools/ colleges
- Ideally continuing to offer bespoke support for young people

CHALLENGES

1. Need for further guidance including the proposed budget
2. Recruitment vs outreach
3. Ownership / buy in from current partners
4. HEI commitments within APP without the above information
5. Attrition rate of NCOP staff
6. Current outreach programmes
7. What happens to the NCOP learners who don't fall within the POLAR 4 Q1 & 2?
8. Support for NCOP students – bespoke/ local – how does that continue?
9. Where to get additional funding from?
10. Working with bespoke groups (e.g. PRUs, home school etc)

ACTIVITY

In groups can you:

- Share a programme or project that you envisage working under the Outreach hubs
- Discuss two of the challenges. How do we mitigate (or eliminate) them?
- What other challenges do you foresee?
- What are the benefits for your NCOP to the outreach hubs?