



What do you know about medicine?

Clare Owen, Assistant Director, Medical Schools Council

Dr Paul Garrud, Chair, Medical Schools Council Selection Alliance

Overview of session

1. About medical school
2. Selection process
3. Accessing guidance

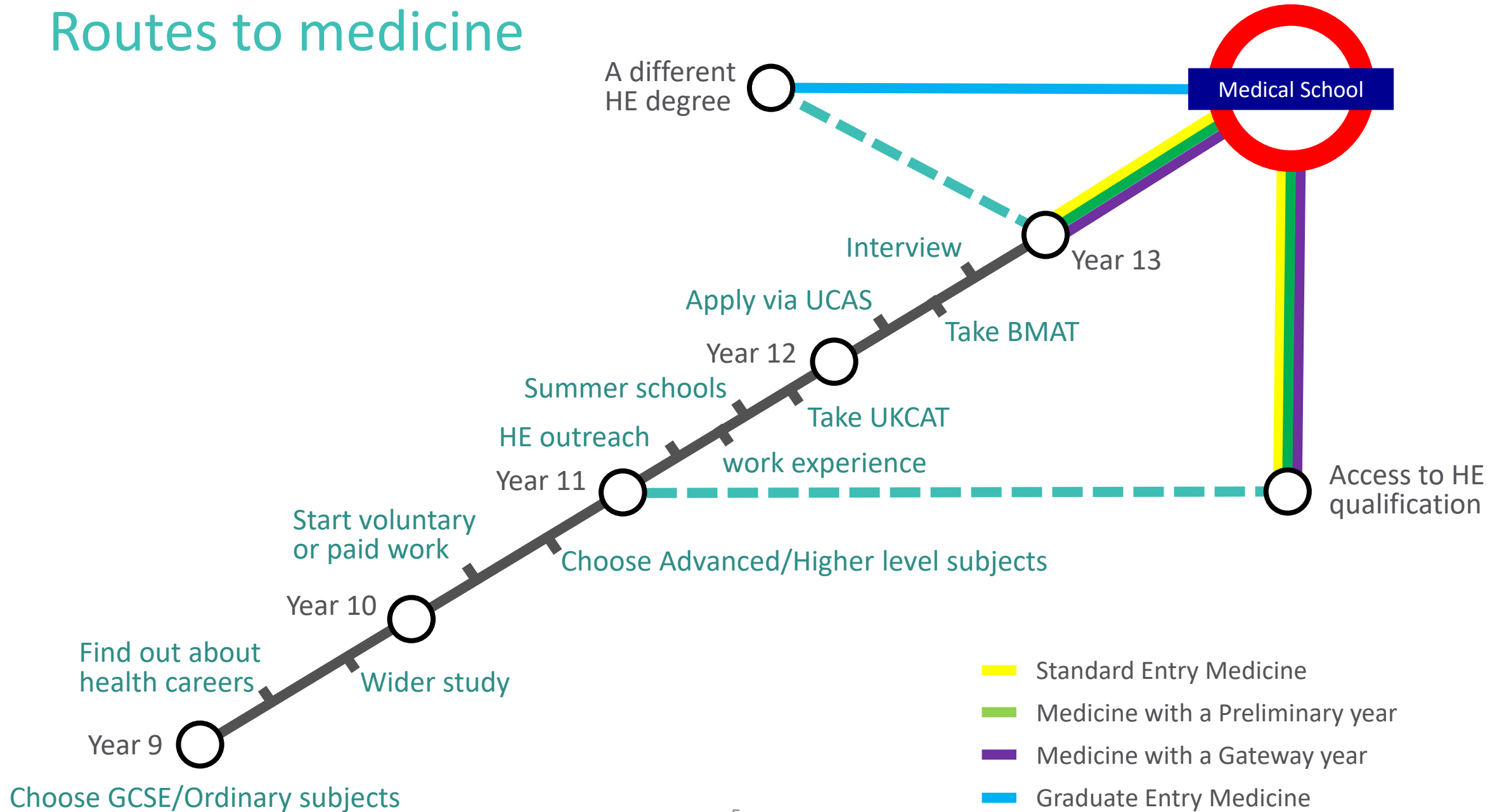
But first...

A QUIZ!

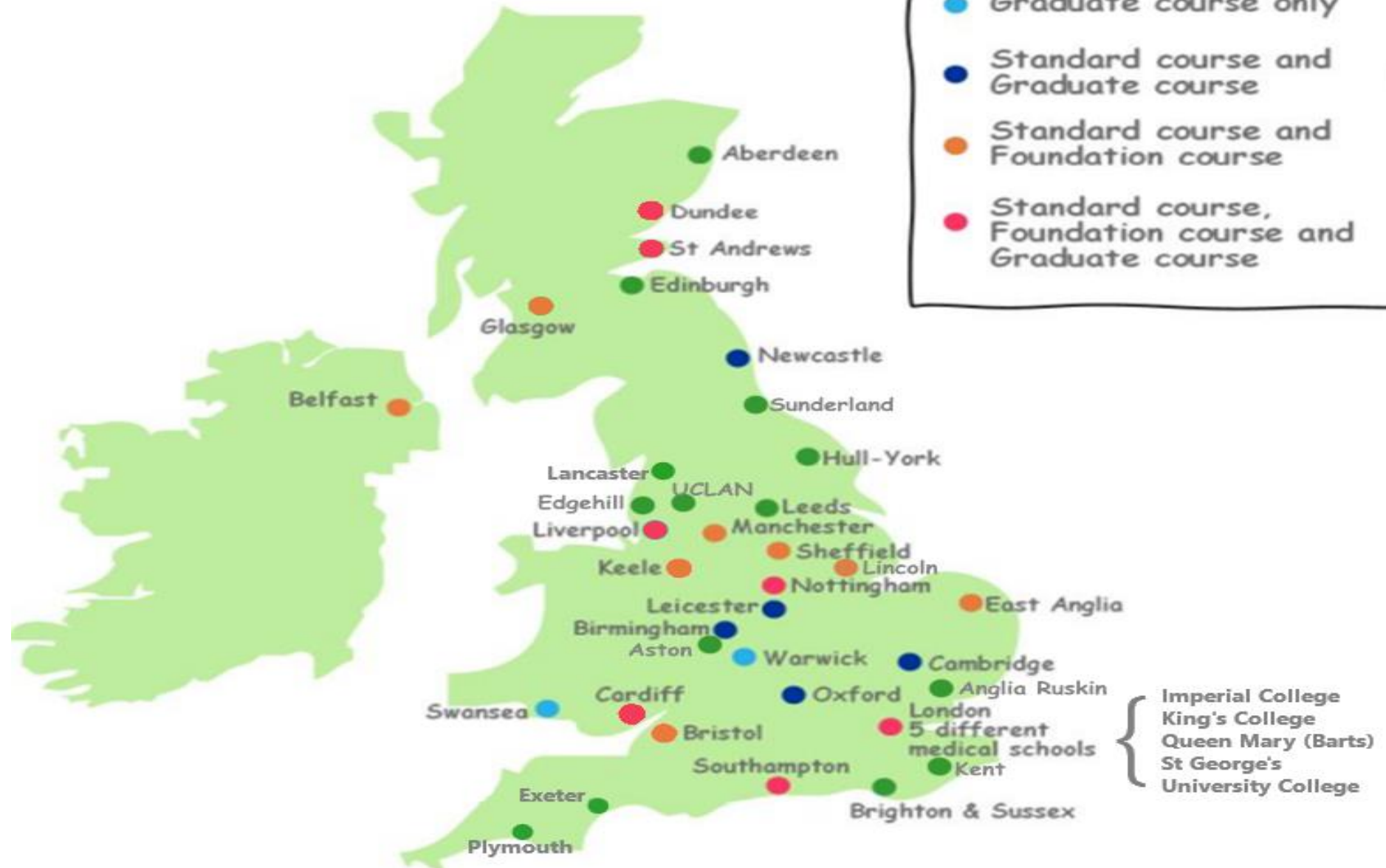
About medical school



Routes to medicine



Map of UK medical schools



Does it matter which medical school you go to?

In terms of career prospects – No

- There is national recruitment based on assessment at all levels of medical training progression.

In terms of student experience – Yes

- Medical schools teach in a variety of different ways which will suit some students more than others.
- Also consider geography.

What is widening participation?

Widening participation aims to ensure there is equality of access to the medical profession. This means that medical schools must have processes in place to support the recruitment, progression and retention of medical students from under represented backgrounds. This includes students with protected characteristics as defined by the Equality Act (and equivalent legislation across the UK) as well as those from a lower socio-economic background.

MSC Selection Alliance definition of widening participation, 2017

Data on current demographics

Gender – female

- 51% of population
- 55% of medical students

Ethnicity – white

- 87% of population
- 64% of medical students

Ethnicity – Asian or Asian British

- 6% of population
- 24% of medical students

Ethnicity – Black or Black British

- 3% of population
- 3.8% of medical students

With a disability

- 18% of population
- 9% of medical students

Socioeconomic

Privately funded schools

- 7% of population (12% of 6th form) attended privately funded schools
- 22% of medical students attended privately funded schools

Managerial or Professional job

- 31% of population work in a Managerial or Professional job.
- 77% of medical students are from Managerial or Professional background

Routine job

- 25% of population work in a Routine job
- 2% of medical students are from a Routine job background

Selection



How do medical schools select?

Academic attainment

GCSEs, A levels, Highers
and previous degrees

Aptitude tests

UKCAT, BMAT, GAMSAT

Interviews

MMIs and structured
interviews

Work experience

Work experience is

- Generally not scored but may be discussed at interview
- Not about how many different doctors you have shadowed
- About how you demonstrate the values medical schools are looking for

Work experience – task

What sort of experience could you use to demonstrate these values and attributes?

- Teamwork
- Empathy
- Communication skills
- Resilience
- Personal organisation

What does our guidance say?

Work experience is any activity or life experience that helps you to prepare for medical school. This means any activity that allows you to demonstrate:

- That you have had people-focused experience of providing a service, care or help to others and that you understand the realities of working in a caring profession.
- That you have developed some of the values, attitudes and behaviours essential to being a doctor such as conscientiousness, good communication skills, and the ability to interact with a wide variety of people. The values that medical schools are looking for are set out in the *NHS Constitution* and explained in the MSC guidance *Core values and aptitudes needed to study medicine*.
- That you have a realistic understanding of medicine and in particular the physical, organisational and emotional demands of a medical career.

Personal statements

- Generally not scored but may be discussed at interview
- Some schools may read them to identify whether a student has experienced disadvantage.
- They should focus on how they meet the values, skills, and attributes needed to study medicine.
- Gaps in education, criminal convictions etc should be discussed if relevant

Academic Reference

Medical schools expect an academic reference to provide:

- An assessment of the student's academic potential.
- Confirmation that the student is motivated and committed to studying medicine
- Confirmation that the student is suitable for medicine.
- Any information about the social or educational disadvantage that they have experienced and/or overcome.
- Any additional information that the student may not have included.

Academic Attainment

Generally applicants need AAA at A level or AAABB in Scottish Highers (36 IB).

Most medical schools require Chemistry at higher level.

BUT

Contextual admissions are widely used by medical schools and widening participation candidates can be offered a place with lower grades.

Contextual admissions examples

Southampton - BM6 programme for WP students

A level grades BBB including chemistry and biology.

You must satisfy **three** of the eligibility criteria listed below in order to be eligible for the BM6 programme, and you will be expected to provide documentary proof.

- First generation applicant to higher education
- Parents, guardian or self in receipt of a means-tested benefit
- Young people looked after by a Local Authority
- In receipt of a 16-19 bursary or similar grant
- In receipt of free school meals at any point in Years 10-13
- Living in an area with a postcode which falls within the lowest 20 per cent of the Index of Multiple Deprivation (authenticated by the University), or a member of a travelling family

Contextual admissions examples

Birmingham Access to Medicine Programme - Outreach programme which if successfully completed will allow a reduction of three A level grades.

Students also need to meet the following criteria:

- Attend a partner school or college within the West Midlands
- Parents have no experience of Higher Education in the UK or abroad
- Main income earners in their household are not in professional occupations, e.g. not teachers, doctors, solicitors or similar
- Annual household income is £42,875 or less before tax
- Home postcode is in an area with [low levels of progression to higher education](#)
- Attend a non-selective state school or college which is a partner in the A2B scheme.

Contextual admissions examples

Manchester – standard entry

To help identify talented students from all backgrounds, UKCAT scores from UK candidates who hold a WP Plus Flag, or who have experienced local authority care, are considered against each other. We give additional consideration to Widening Participation indicators at the interview stage and may also do so upon results confirmation.

Use four pieces of contextual information, where available.

- The postcode that you have provided as your home address
- Whether you have been looked after or in care for more than three months.
- The performance of the school or college where you took your GCSEs or equivalent qualifications.
- The performance of the school or college where you took your A-levels or equivalent qualifications.

Entry requirements



Entry requirements for UK medical schools
2018 entry



Advise these students...

- Keira has been predicted AAA at A Level. Her GCSEs are not as strong and her only A grade is in Maths, her other grades are four Bs and 3 Cs. What courses would you recommend her to apply to?
- Jack achieved A*AA in his A levels. He studied English Literature, Law and Biology. He has now decided he would like to study medicine – what are his options?
- Omar has a 2:2 degree in Chemistry and would like to study medicine. He achieved AAA in Chemistry, Maths and Psychology at A Level and has excellent GCSE results. What options does Omar have?
- Kelly is predicted BBB in her A levels, she is taking Chemistry, Biology and Maths. Kelly has been in care and attends a poorly performing school. Which courses would you recommend for Kelly?

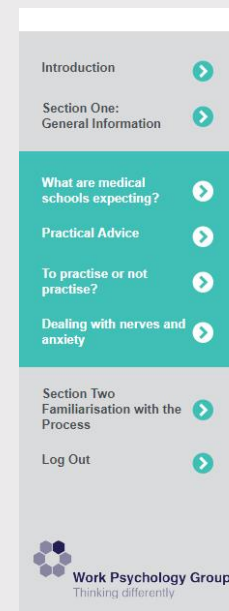
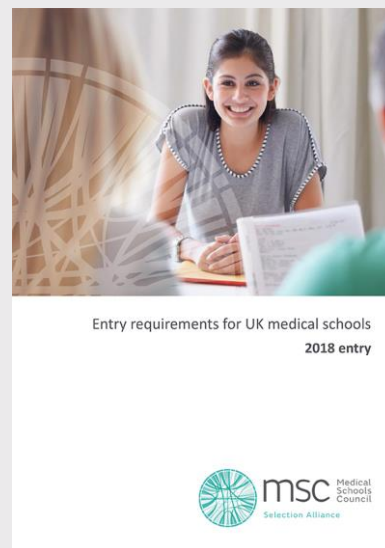
Interviews

- All bar one medical school in the UK interview candidates
- Purpose is to assess personal qualities and values
- Generally they use an MMI or a structured panel interview

Accessing guidance



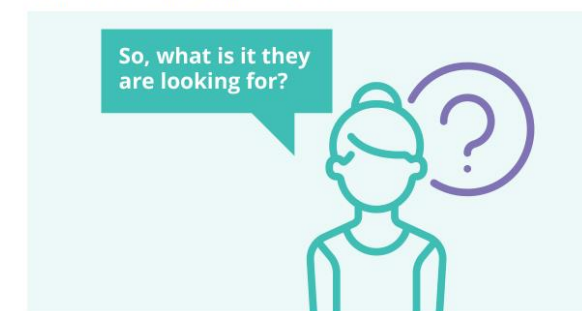
Better information for applicants



Section One: General Information

What are medical schools expecting?

You have been invited to a structured interview or an MMI as part of the assessment process for entry to medical school. It's an exciting time, but one that can be overwhelming and worrying too. You may not have ever experienced an interview, and it is likely that you will not have come across an MMI either. Try not to panic; this tool is designed to help you understand a little more about the process and what the medical schools are looking for during the assessments.



Firstly, you have been invited to the interview as they think you have potential. This process is about proving them right. Below are some broad areas that the interviewers on the day will be looking for; these are not exhaustive, but should give you an overview of expectations. Importantly they are not looking for just one type of 'medical student'; be yourself.

Please click on the subtitles for more information.

- Understanding gained by work/voluntary experience in a service or caring role
- A positive attitude
- Behaviours and values that align with those of a medical professional
- Knowledge of the medical profession and current issues in healthcare

For teachers and careers advisers

- Four regional conferences for teachers and careers advisers in 2017
- Five guidance booklets covering the journey to medicine
- Series of webinars planned for 2018



Find out more!

- MSC conference for all outreach staff and careers advisers
- 24 September in London
- £70 to attend
- Will cover everything we discussed today in much more detail enabling attendees to help students interested in medicine.

An abstract graphic on the left side of the slide, consisting of a semi-circle filled with numerous overlapping, curved lines in various shades of teal and light blue, creating a complex, web-like pattern.

Thank you

Get in touch

MSC Selection Alliance
20 Tavistock Square
Woburn House
London WC1H 9HD

Tel: +44(0)20 7419 5494
admin@medschools.ac.uk
www.medschools.ac.uk
[@ukmedschools](https://twitter.com/ukmedschools)