

# Engaging academics in the WP programme at Sussex

# WP at Sussex

- 80 schools
- Coastal and rural
- Hastings
- Primary

Sussex  
Partnerships



- Croydon
- South London
- 'Cold spots'

London  
Partnerships



- Realising Opportunities
- Brilliant Club
- Into University

Collaborative  
Partners



- Two Learning Mentors
- Crawley secondary schools

Villiers Park



Ambassador  
programme



- Extended projects
- Summer Schools
- Academic engagement

Academic  
Events



# Academic Events Team



**Chris Mason**



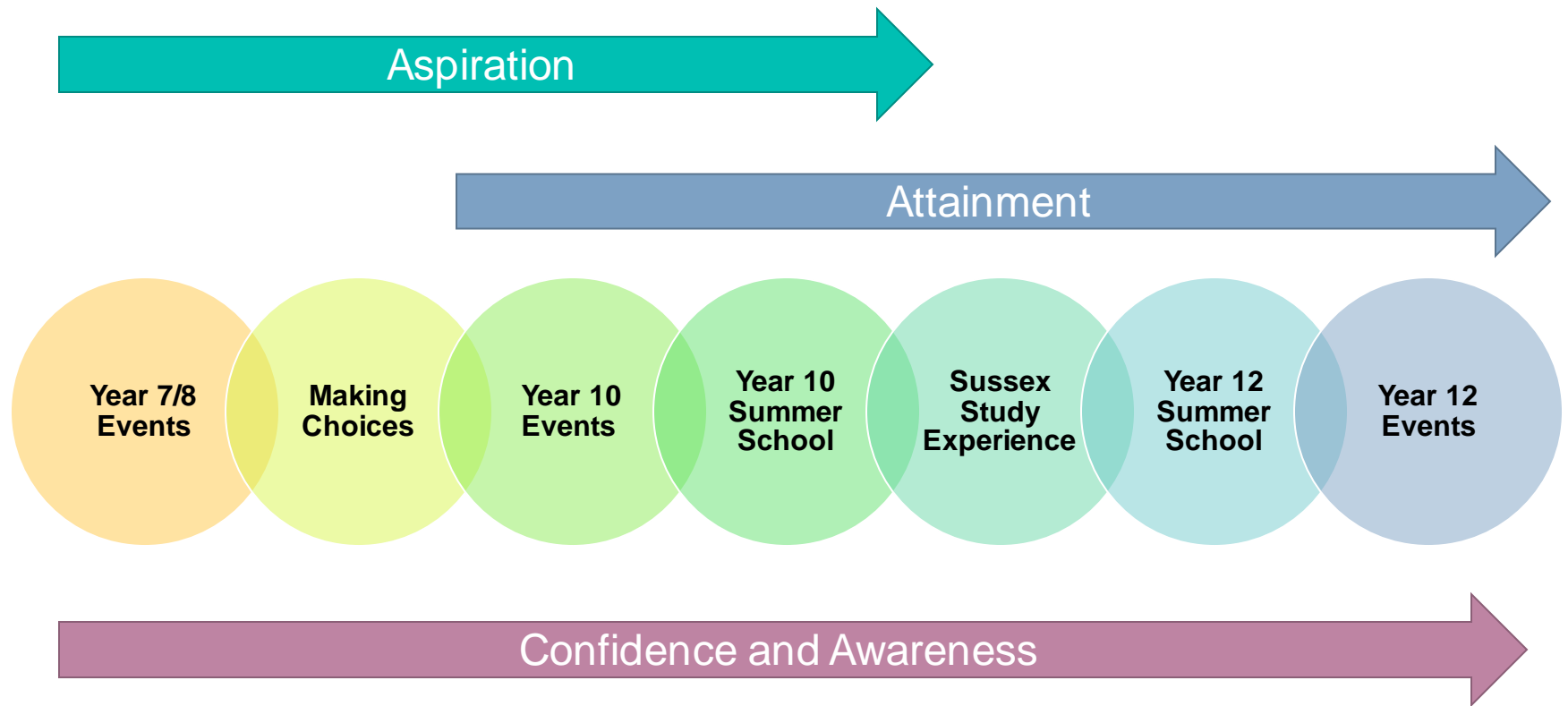
**Sarah Holman**



**Karen Stalker**



# Academic Events

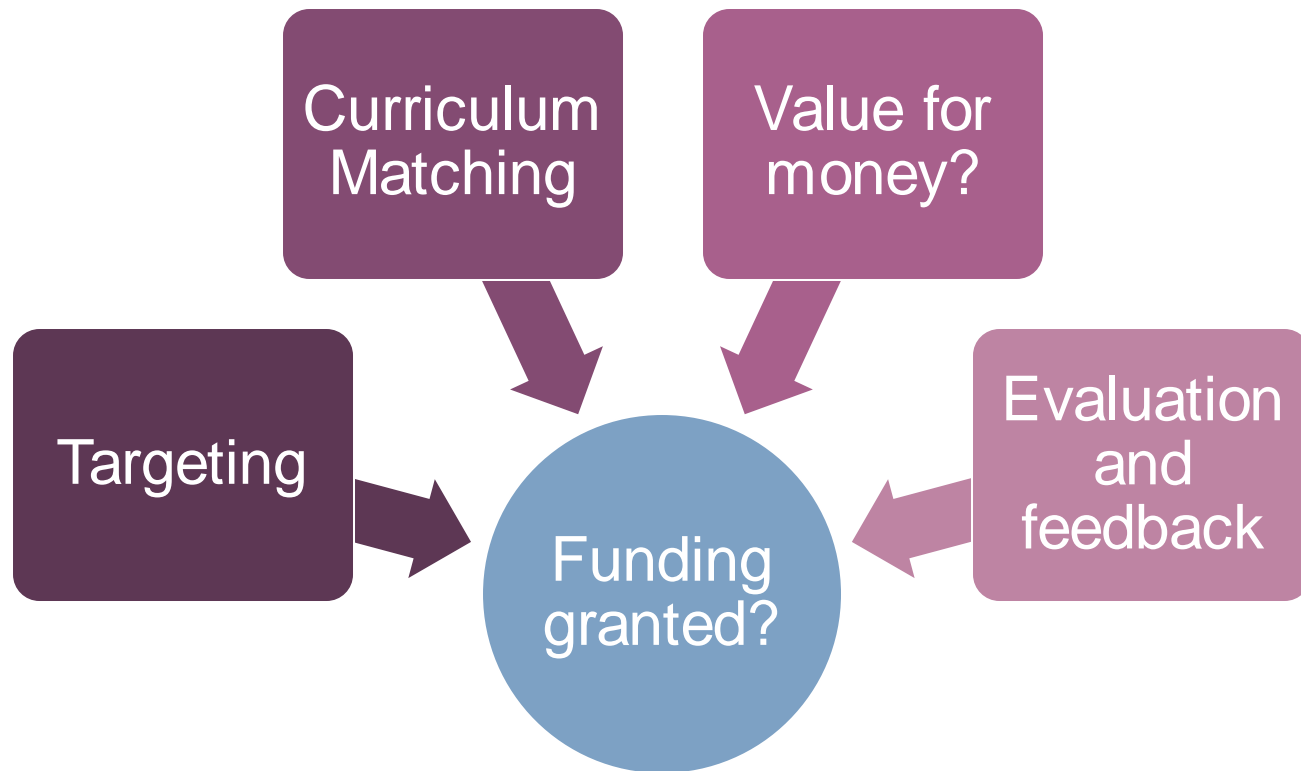


```

graph TD
    A[Initial discussion] --> B[Proposal]
    B --> C[Agreement]
    C --> D[Logistics]
  
```

US  
UNIVERSITY  
OF SUSSEX

# Initial discussions



# Targeting

- Partnerships with 80 schools and colleges

First-  
Generation  
Scholars



- Access agreement targets

POLAR 3  
Quintile 1 & 2



- Working with targeted areas and partners

Disability,  
LAC, Care  
Leaver, BAME

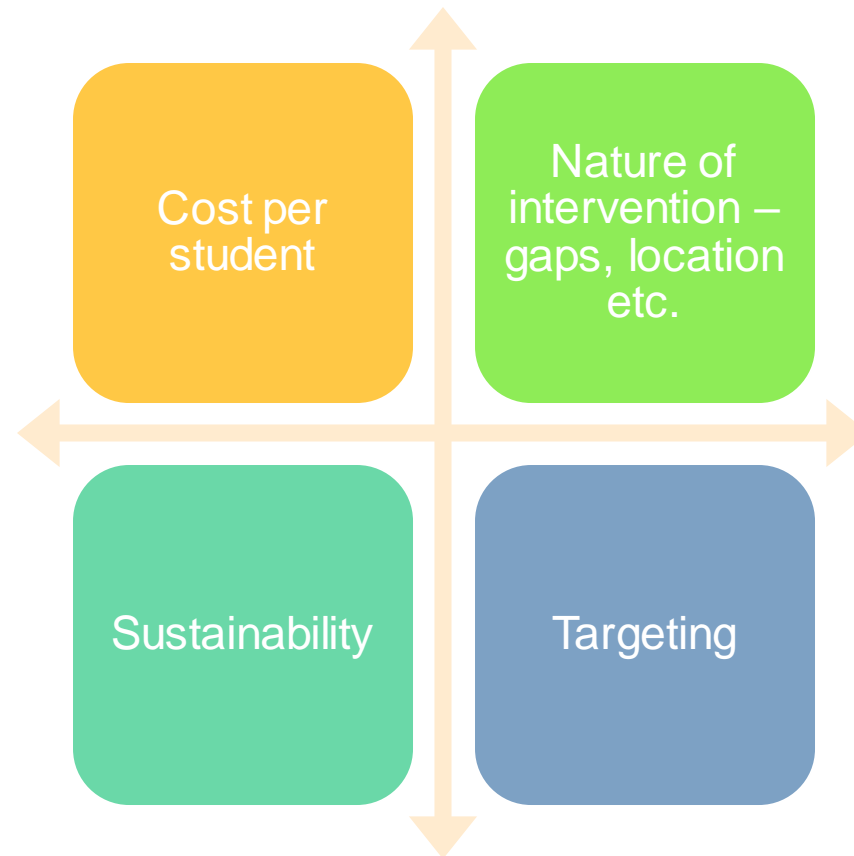


# Curriculum Matching





# Value for Money



# Evaluation and Feedback

## STAND UP FOR JUSTICE

Tuesday 10<sup>th</sup> January & Tuesday 24<sup>th</sup> January 2017



### KEY STATS

**Number of participants:** 17 M: 2 F: 15

**Schools:** St Catherine's College; Sir Robert Woodard Academy; Hove Park School; Sackville School

**% students that found event interesting:** 100%

**% students that found event enjoyable and fun:** 97%

**% students that learnt new things about Law:** 100%

**% students encouraged to consider university in the future:** 93%

**% students encouraged to consider studying Law at university:** 75%

**US**  
UNIVERSITY  
OF SUSSEX

### FUTURE DEVELOPMENT

The general feedback for future development was the students wishing they had approached the challenge of public speaking with more confidence.

In terms of more general event feedback, there were a few comments about pre-event information:

*"It would be good to have clearer instruction on how to write a speech before the event"*

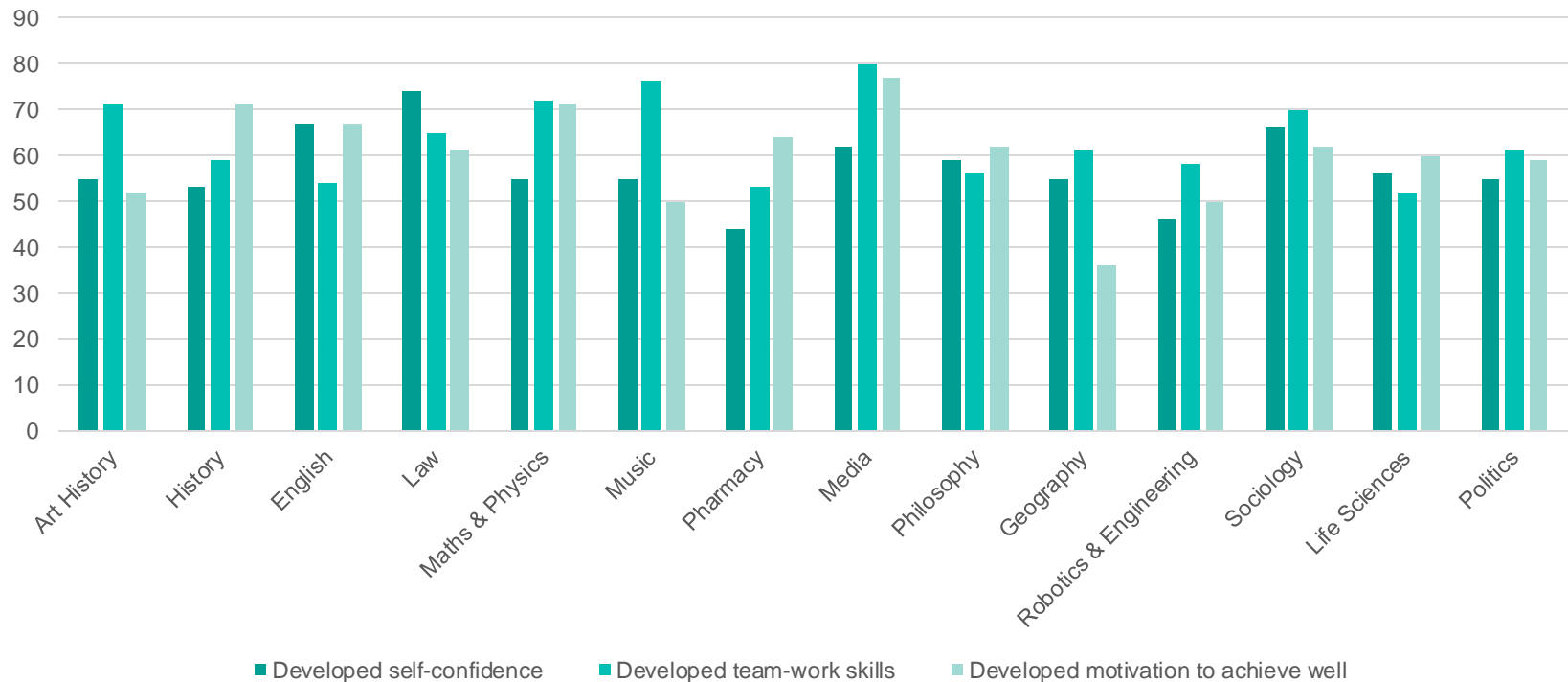
Along that theme, some of the teachers also suggested a hand out for the speeches and relevant video examples be made available pre-event.

This would support the new single day format by ensuring the students come a little more prepared.

**US**  
UNIVERSITY  
OF SUSSEX

# Evaluation and Feedback

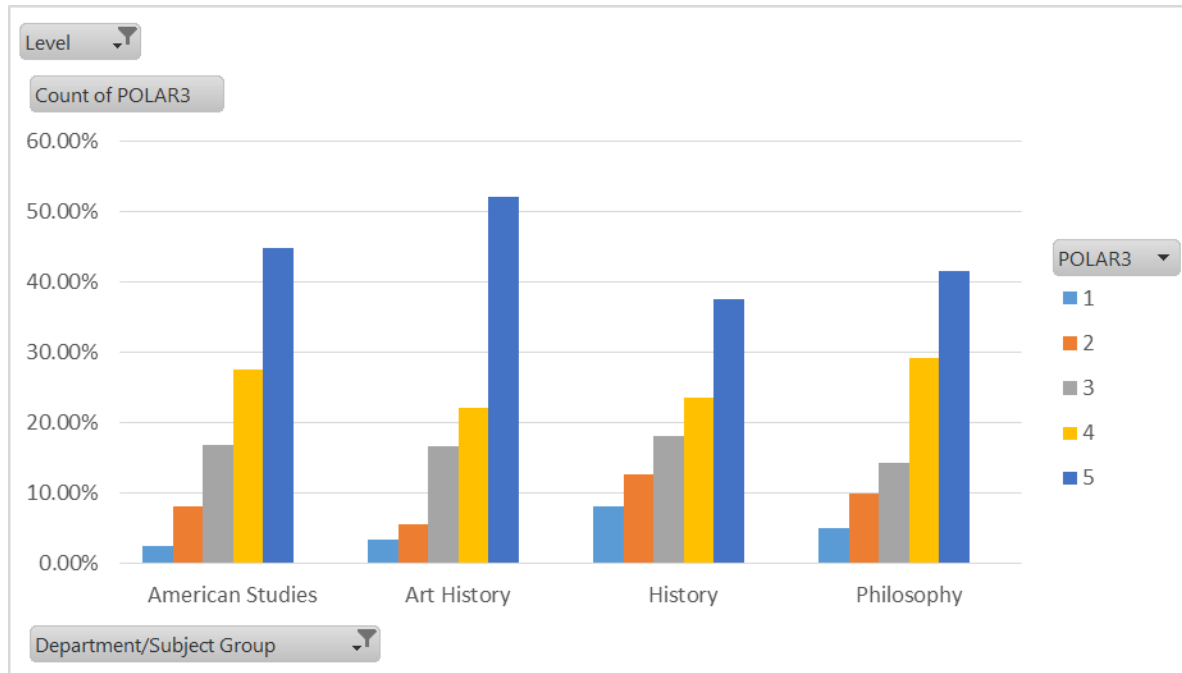
Attribute Development %



# Academic CPD sessions



# WP Profiling



# What do academics gain?



“Yes, the sessions demand planning and thought but they are always hugely rewarding, inspiring and fun. There is a rawness in expression and thought that truly inspires me”

**Verona Ni Drisceoil, Law**

“The most rewarding aspect of the WP work we do is the attempt to break down assumptions behind ‘studying English’. My extensive WP work has proved immensely beneficial to my own teaching practises”

**Tom Wright, English**



# What do academics gain?

“It helps embed my work as an academic historian in the local community and gives me a better understanding of how our university teaching builds on students’ longer historical education”  
**Jake Norris, History**

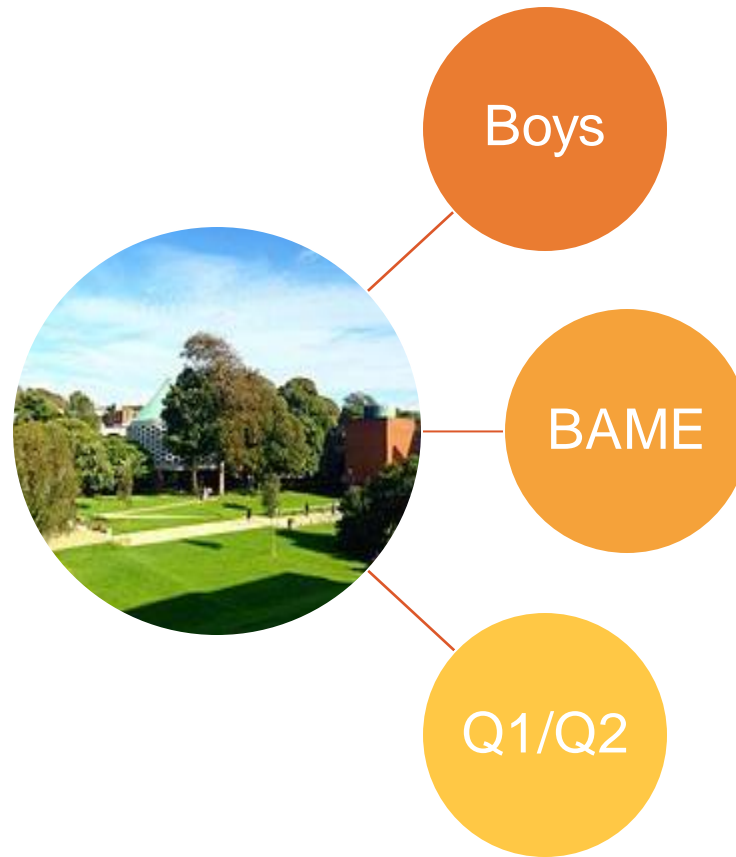


**Also helps to meet public engagement and use for research impact on REF**



“Working with SSE has been really encouraging, especially as a female engineer. I personally love contributing to inspiring girls to choose engineering and computing”  
**Elizabeth Rendon-Morales, Engineering**

# Case Study – Sussex Writes





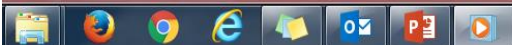
# Other services

- ☐ Thank you events – awards ceremony?
- ☐ References provided for awards
- ☐ Academic handbook
- ☐ Future - customer service questionnaire evaluating our service

**ANY?**  
**QUESTIONS**

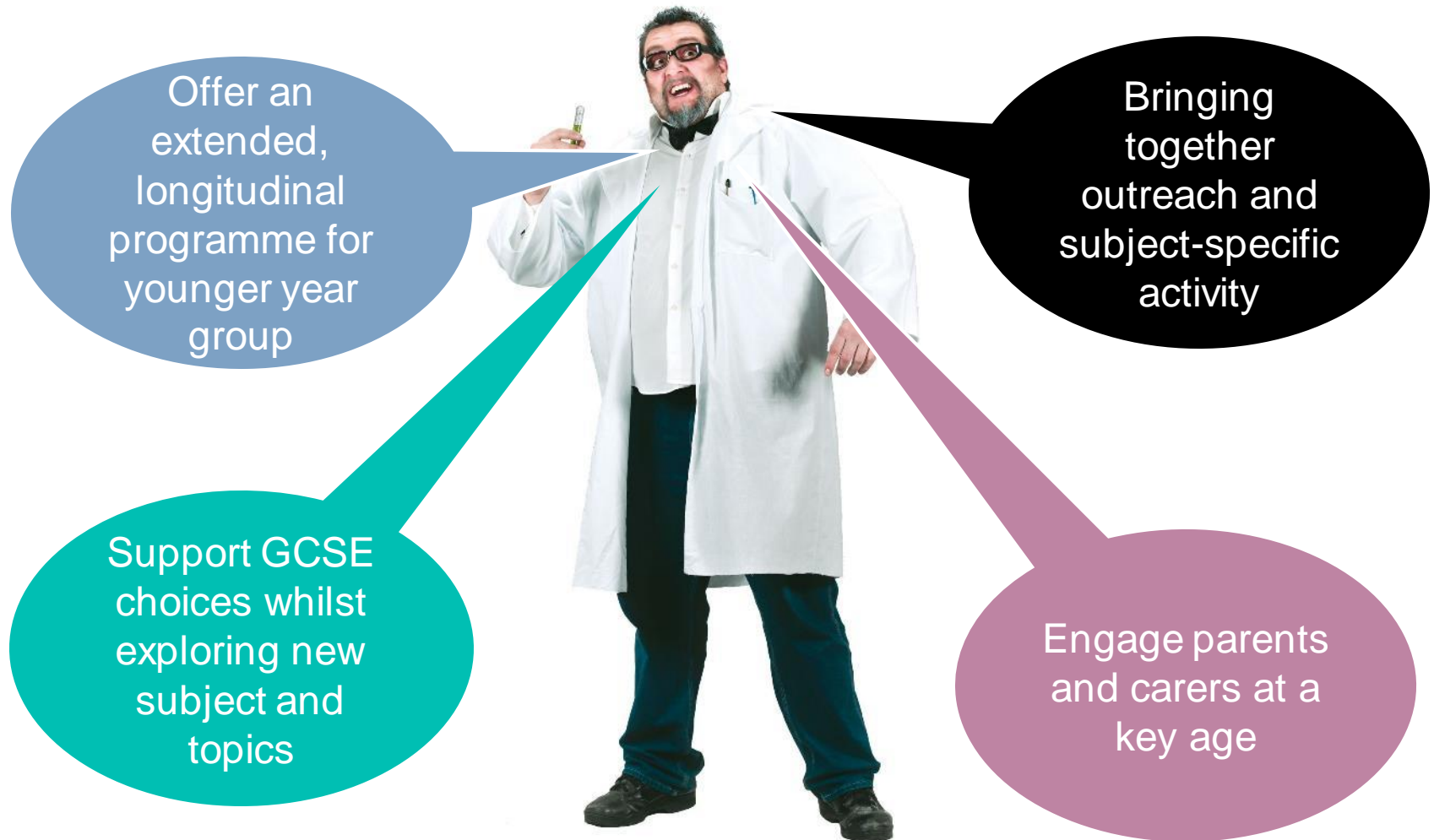
Making Choices with US –  
creating the link between  
KS4 choices and  
attainment, HE and careers

# Making Choices



EN 12:58  
07/06/2017

# Initial thoughts...



# What it could look like...

**Welcome Day**  
*(Full cohort)*  
October



**Programme 1**  
*(20 students)*

**Academic Day 1**  
November/December

**Academic Day 2**  
January

**Academic Day 3**  
March

**Programme 2**  
*(20 students)*

**Academic Day 1**  
November/December

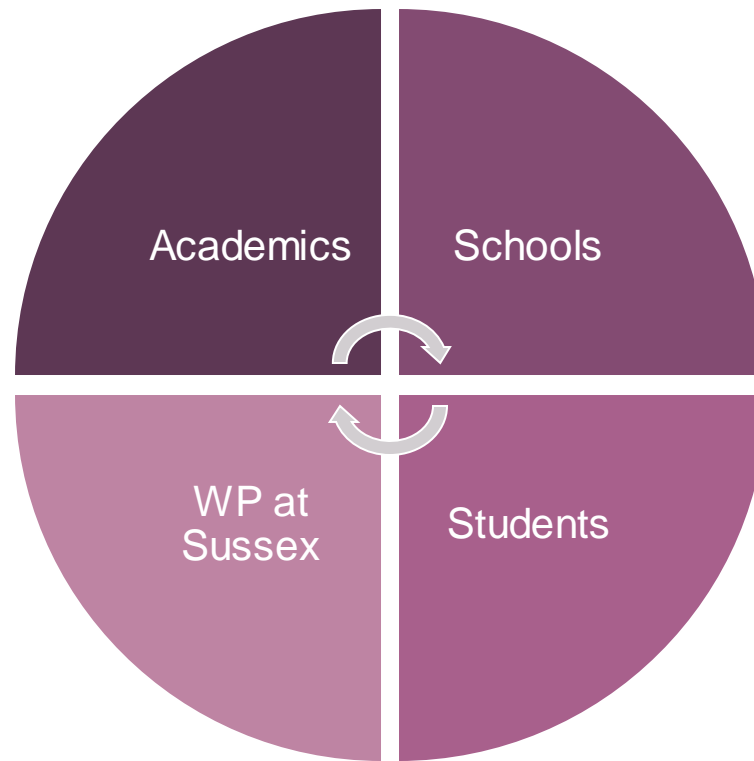
**Academic Day 2**  
January

**Academic Day 3**  
March



**Graduation**  
*(Full cohort)*  
May

# Stakeholders



# Making it happen...



## Making Choices

Making Choices is a programme for Year 8/9 students that incorporates outreach, academic events and CPD opportunities into one comprehensive course from the University of Sussex. We have selected your school for this project with us as we value your partnership and seek a coherent programme that best supports your students as they make their GCSE and future choices, while also providing substantial added value to our partner schools who take part. We are hoping to work collaboratively with your teachers and to incorporate your feedback into our on-going partnerships.

### Who is it for?

Making Choices aims to provide Year 8/9 (depending on school dates for GCSE choices) students from partner schools a sustained academic programme based around a strand of study. It will support participants in making their GCSE choices and current options, as well as offer university information, advice and guidance, and parental engagement.

### Aims and objectives...

- Support and inform students in their GCSE choices
- Introduce learners to new subjects, topics and ways of learning
- Build confidence and encourage a sense of belonging within a university environment
- Grow knowledge around professional pathways and the value of qualifications

Subject strands 2016-7. *Subject to change for upcoming year.*

Humanities	Arts	Social Sciences	STEM
History	Music	Sociology	Maths/Physics
Global Studies	Art	Politics	Life Sciences
Media	English	Law	Engineering
Geography			Robotics
			Pharmacy





# Logistics



Academics

Schools

# Logistics



# Logistics

2017 database - Excel

Chris Mas

	A	B	C	D	E	F	G	H	I	J	K	L	M	N	O	P	Q	R	S	T	U	V	W	X	Y	Z	AA
1	Welcome Day																										
2																											
3	Shoreham	07/11/2016		Hums	Day 1	Thu 15 Nov	Day 2	Oct 25th Jan	Day 3			Arts	Day 1	Eng 15 Nov	Day 2	Art Hls 25th	Day 3										
4	Claverham	22/09/2016		STEM	Day 1	Wed 30 Nov	Day 2	Physics 10.2	Day 3			Hums	Day 1	Wed 30 Nov	Day 2	History 3rd	Day 3										
5	Felpham	12/10/2016		STEM	Day 1	Life Sci 7th	Day 2	Pharm 17th	Day 3			SS	Day 1	Police 7th	Day 2	Sociology 1	Day 3										
6	Ratton	18/10/2016		STEM	Day 1	Robo 05 Dec	Day 2	Life Sci 20th	Day 3			Hums	Day 1	Geo 05 Dec	Day 2	Media 20th	Day 3										
7	Vardean	29/09/2016		STEM	Day 1	Pharm 5th	Day 2	Robotics 23	Day 3			SS	Day 1	Soc 05 Dec	Day 2	Law 23rd	Day 3										
8	TEA	08/10/2016		Hums	Day 1	He 23 Nov	Day 2	Philo 17 Jan	Day 3			Arts	Day 1	Art 23 Nov	Day 2	Mus 17 Jan	Day 3										
9	St Catherine's	01/11/2016		Arts	Day 1	Yus 16 Nov	Day 2	Eng 27th Jan	Day 3			SS	Day 1	Law 16 Nov	Day 2	Pol 11th Jan	Day 3										
10	Robertsbridge	11/10/2016		STEM	Day 1	Phys 25 Nov	Day 2	Maths 27th	Day 3																		
11	Academic Day 1	14-Nov	15-Nov	16-Nov	17-Nov	18-Nov	21-Nov	22-Nov	23-Nov	24-Nov	25-Nov	28-Nov	29-Nov	30-Nov	01-Dec	02-Dec	05-Dec	06-Dec	07-Dec	08-Dec	09-Dec	12-Dec	13-Dec	14-Dec	15-Dec	16-Dec	
12	Shoreham		Phil Eng																								
13	Robertsbridge											Physics															
14	Claverham													Media/Maths													
15	Felpham																Geog/Hubs			Real Life Sci							
16	Ratton																Pharmacy										
17	Vardean																			Sociology							
18	TEA																										
19	St Catherine's																										
20																											
21	Academic Day 2	09-Jan	10-Jan	11-Jan	12-Jan	13-Jan	16-Jan	17-Jan	18-Jan	19-Jan	20-Jan	23-Jan	24-Jan	25-Jan	26-Jan	27-Jan	30-Jan	31-Jan	01-Feb	02-Feb	03-Feb						
22	Shoreham														Sci/Art												
23	Robertsbridge																										
24	Claverham																Maths										
25	Felpham																										
26	Ratton																										
27	Vardean																										
28	TEA																										
29	St Catherine's																										
30																											
31	Academic Day 3	27-Feb	28-Feb	01-Mar	02-Mar	03-Mar	06-Mar	07-Mar	08-Mar	09-Mar	10-Mar	13-Mar	14-Mar	15-Mar	16-Mar	17-Mar	20-Mar	21-Mar	22-Mar	23-Mar	29-Mar						
32	Shoreham																										
33	Robertsbridge																										
34	Claverham																										
35	Felpham																										
36	Ratton																										
37	Vardean																										
38																											

Want to avoid mon and tues as they've already done these days  
only 17th - 20th at a push as year 11 mocks are on  
Felpham Sociology TBC

Schools: Dates Academics Slickers Claverham Felpham Shoreham Ratton Eastbourne Academy St Catherine's College Vardean Robertsbridge

US  
UNIVERSITY  
OF SUSSEX

[illegible]

# Resources



## MAKING CHOICES

### Choose a career that's right for you

If you want to have a fun and exciting career, just think about your personality, and match it with the careers you love the most.

There are many things to think about when deciding on the right career, including your personality style. If you choose a career that fits your strengths and personality, you will enjoy your job and be happier at work. When your strengths match the job, it's a 'good fit'. Employers call these strengths your transferable skills.

In our research, we've found that people are most successful when they can use what they are really good at in their jobs. Knowing your personality style is one of the best ways of finding out what your strengths are and what career path is the best for you.

**START NOW**

# Subjects

## **STEM**

Pharmacy, Life Sciences,  
Robotics, Engineering,  
Medicine, Maths, Physics

## **ARTS**

English, Music, Art History,  
Film Studies

**Making  
Choices**

## **HUMANITIES**

History, Geography, Media,  
Business, Philosophy

## **SOCIAL SCIENCES**

Law, Politics, Sociology

# Evaluation

## Attitudinal Change

### Making Choices

Name: ..... School: .....  
We are interested to know how Making Choices may help you over the next few months. We will give you this evaluation back at Graduation so you can reflect on what you have learnt throughout the programme.

1 = Completely Disagree 10 = Completely Agree

I wish to attend university in the future	Welcome Day	1	2	3	4	5	6	7	8	9	10
	Graduation	1	2	3	4	5	6	7	8	9	10
How has completing Making Choices changed your response? (Graduation)											
I can picture myself as a university student	Welcome Day	1	2	3	4	5	6	7	8	9	10
	Graduation	1	2	3	4	5	6	7	8	9	10
How has completing Making Choices changed your response? (Graduation)											

**Start and end of programme, focussing on attitudinal change towards university**

## Operational

### MAKING CHOICES GEOGRAPHY

*"I want to take Geography as a degree"*



Day 3

Number of participants: 12  
School: The Eastbourne Academy  
% students that found event interesting: 83%  
% students that found event enjoyable and fun: 75%  
% students that learnt new things about Geography: 100%  
% students curious to find out more about Geography: 50%  
% students encouraged to consider studying Geography at GCSE (if available): 87%  
% students encouraged to consider studying Geography at college/sixth form: 25%  
% students encouraged to consider studying Geography at university: 42%

**Each academic day. Considering subject in future? What worked, what didn't**

## Parent/Teacher



**Has Making Choices made a difference? How has graduation event helped?**



# Students



"I decided to choose **Sociology** because of the programme"



"It inspired me to do **History**"



"**Art History** influenced me to consider Art in my options"



# Students



# Parents

“She has seen  
a future she  
never thought  
possible”

“Making  
Choices is like  
a window into  
their future”

“A lot of the  
barriers I  
thought were  
there were  
explained away  
this evening”

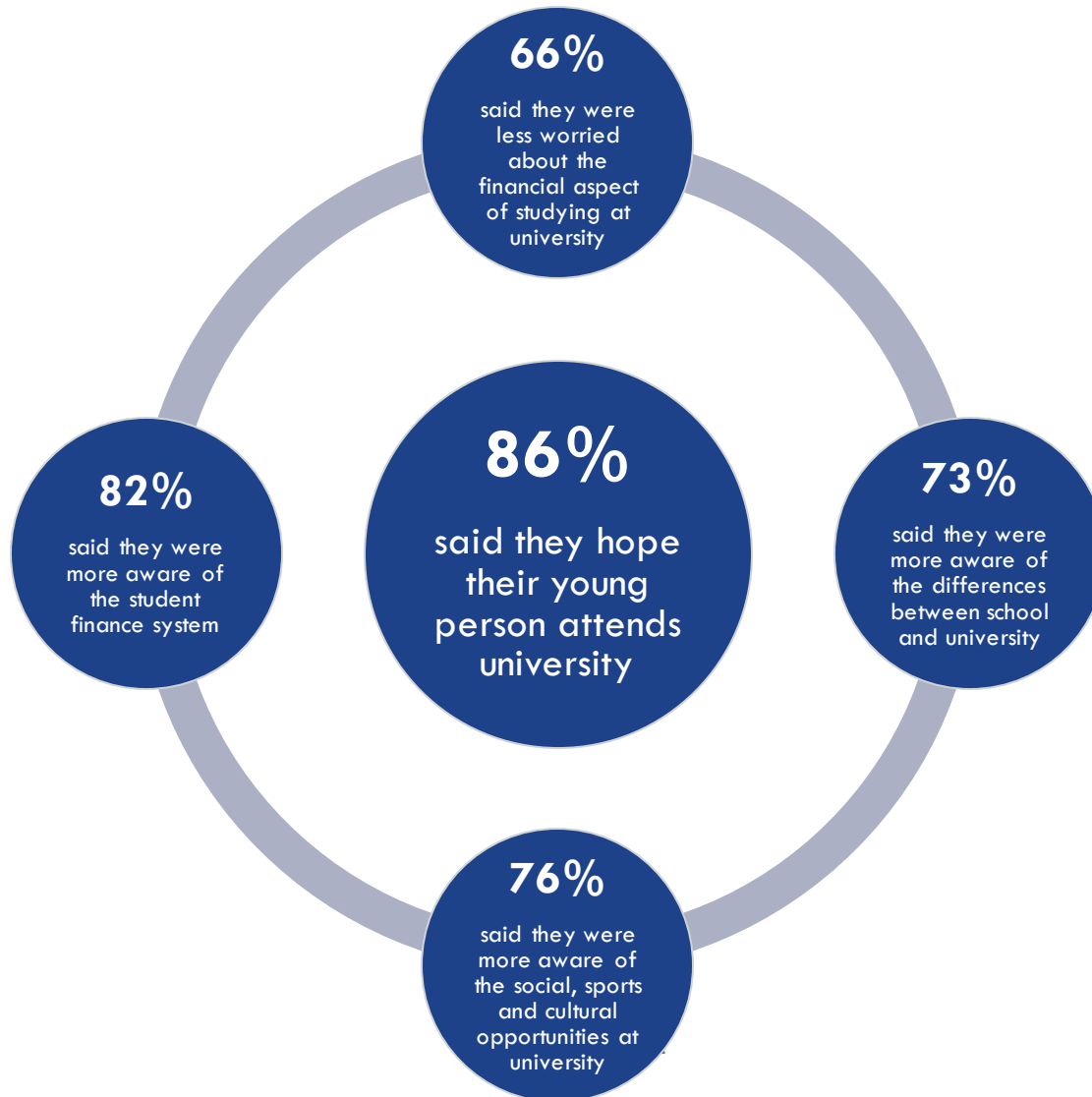


“He’s always said  
he doesn’t want to  
go to university  
but now he is  
considering it”

“It has been a  
brilliant opportunity  
– wish I’d had the  
same when I was  
at school”

“Encouraged him  
and made him  
feel good about  
studying”

# Parents



# Teachers

“I have just had the privilege to interview all the Making Choices students. I will put together their comments but all agreed it was great and that we should offer it again. I have seen these students really grow and it has helped focus them in school too”

**Alison Browning,  
Varndean School**



# New developments 2017/8

	10.00	10.15	10.50	11.35	12.20	13.05	13.45	14.30
St Catherine's College	<b>Register</b> <i>Fulton Social Space</i>	<b>Guest Speaker</b> Cameron Parker <i>Fulton A</i>	<b>Post-18 Careers</b> Alan Bullock <i>Jubilee 143</i>	<b>Gap Years</b> Lucy Devall <i>Jubilee 143</i>	<b>LUNCH</b> Eat Central	<b>Careers</b> Rosie, Lauren, Gav <i>Fulton 209</i>	<b>Study Abroad</b> Chris, Sarah <i>Fulton 209</i>	<b>Evaluation and Finish</b> <i>Fulton 209</i>

❑ Making Choices +

❑ Grow to 19

academic subjects

❑ Two more schools

# Resources

**Please email [wpevents@sussex.ac.uk](mailto:wpevents@sussex.ac.uk) for any resources we have outlines in these papers including:**

- ☐ Evaluation forms
- ☐ Feedback forms
- ☐ Academic Handbook
- ☐ Academic CPD sessions
- ☐ Making Choices Graduation Yearbook
- ☐ Anything else that might be useful

# Final thought

“I am proud to be here discussing Making Choices and our work with academics. It has been an amazing journey, working with committed academics, brilliant colleagues, wonderful students and making a real difference...”



**ANY?**  
**QUESTIONS**

